

# Workshop Format

DISCUSSION MODULES	DURATION
1. Project Overview	10 min
2. Required Station Elements	10 min
3. Station Siting and Design Criteria	15 min
4. Goals & Opportunities	15 min
5. Challenges & Constraints	20 min
6. Proposed Station Concept	30 min
7. Wrap Up – What We Heard Today	20 min

# Station Siting & Design Criteria

## Station

- Proximity to major activity centers and/or planned TODs
- Good vehicular and pedestrian access
- Compatibility with surrounding land uses
- Proximity to potential parking site(s)
- Avoidance of business or resident displacements
- Minimal environmental impacts
- User safety and security
- Good connectivity to transit

## Parking

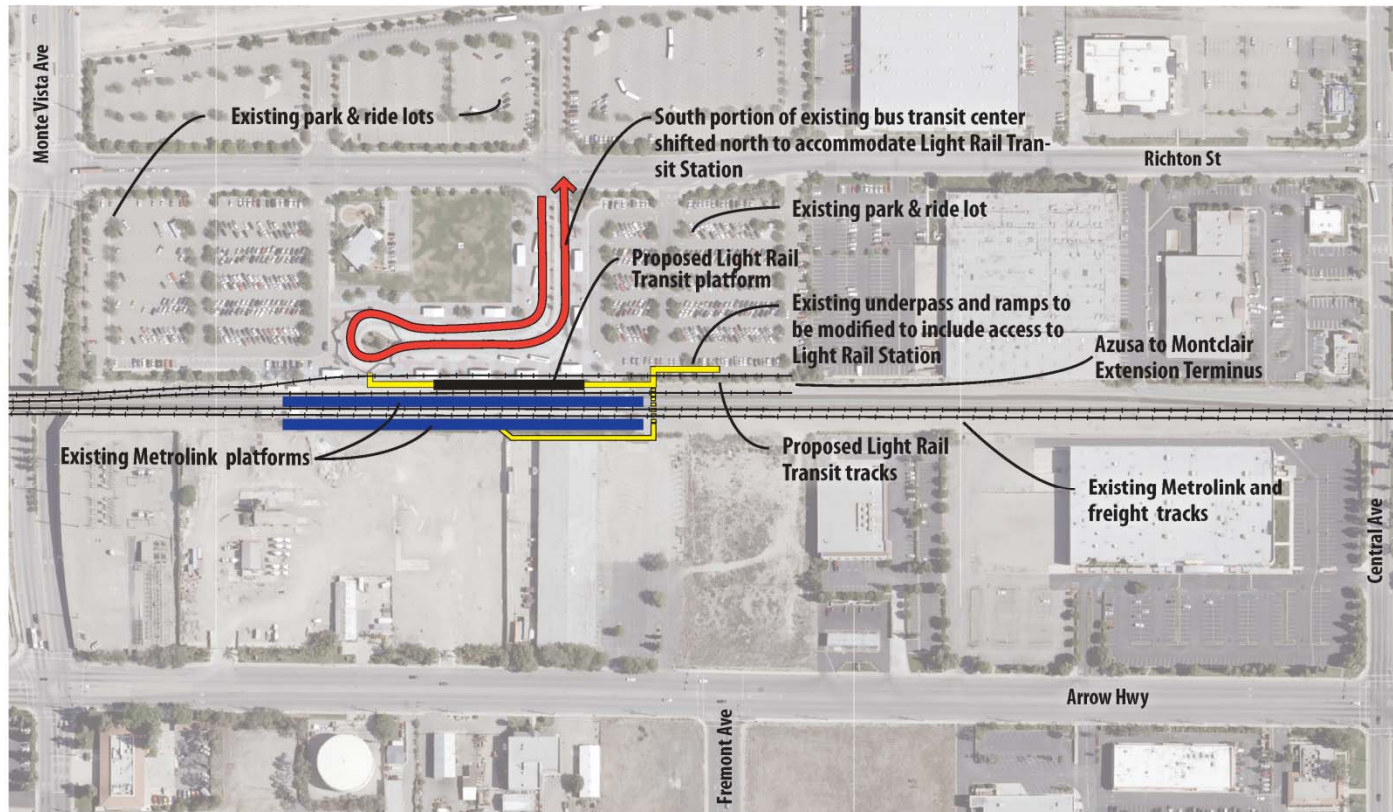
- Proximity to station platform(s)
- Sufficient size and shape of parcel
- Good vehicular access and egress
- Safe pedestrian access to and from station
- Compatibility with surrounding land uses
- Minimize business or resident displacements
- Minimal environmental impacts
- Potential for shared parking with Metrolink and/or other users
- Consistency with zoning or building code requirements

Others \_\_\_\_\_

?



# Proposed Station Concept

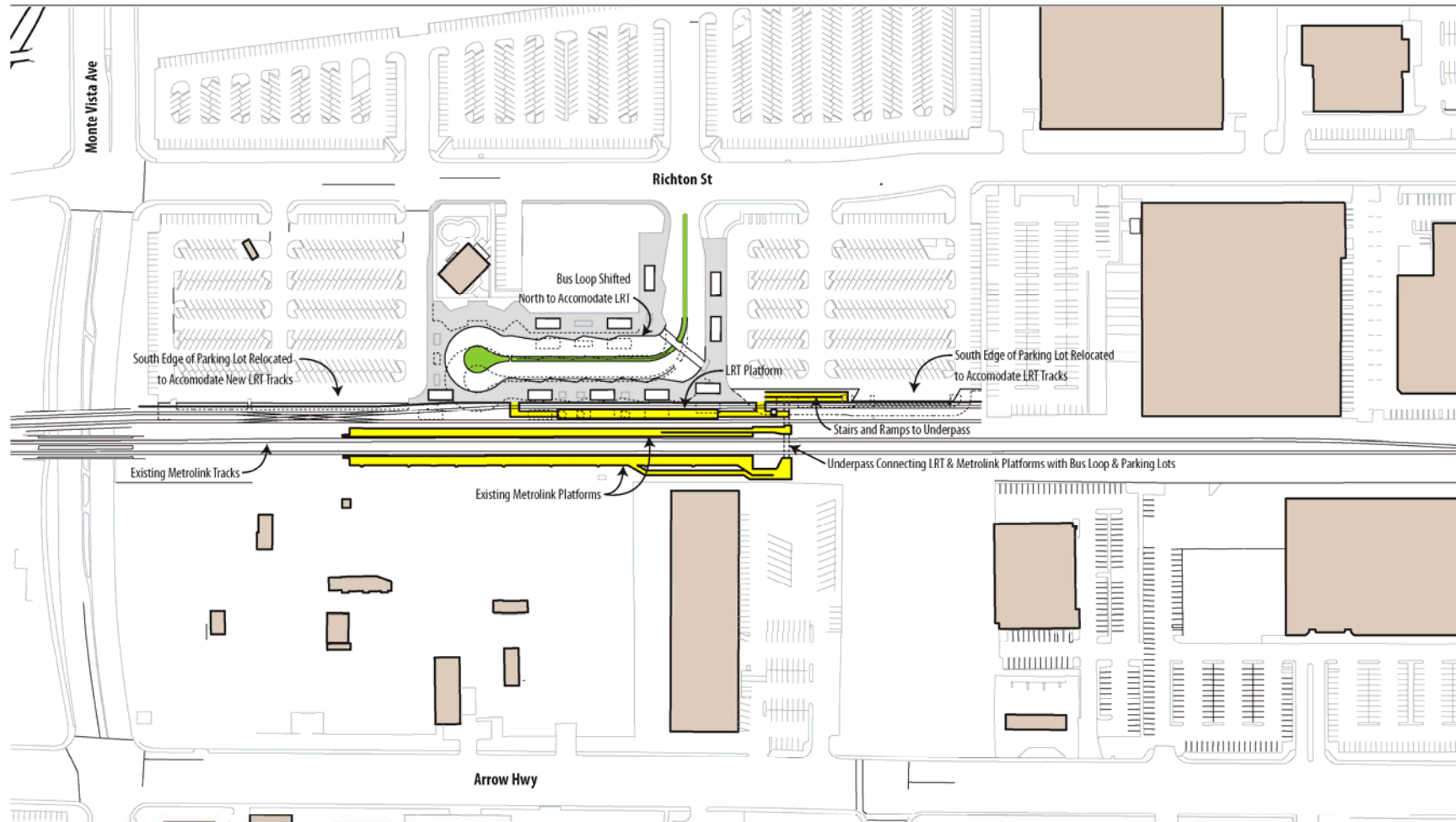


- LEGEND**
- Pedestrian Circulation
  - Light Rail Transit Parking
  - Light Rail Transit Platform
  - Rail Tracks
  - Metrolink Platform

Aerial courtesy of the U.S. Gec



# Proposed Montclair Station



# Required Station Elements

## System Devices



## Customer Interfaces



## Station Access



## Safety Features

