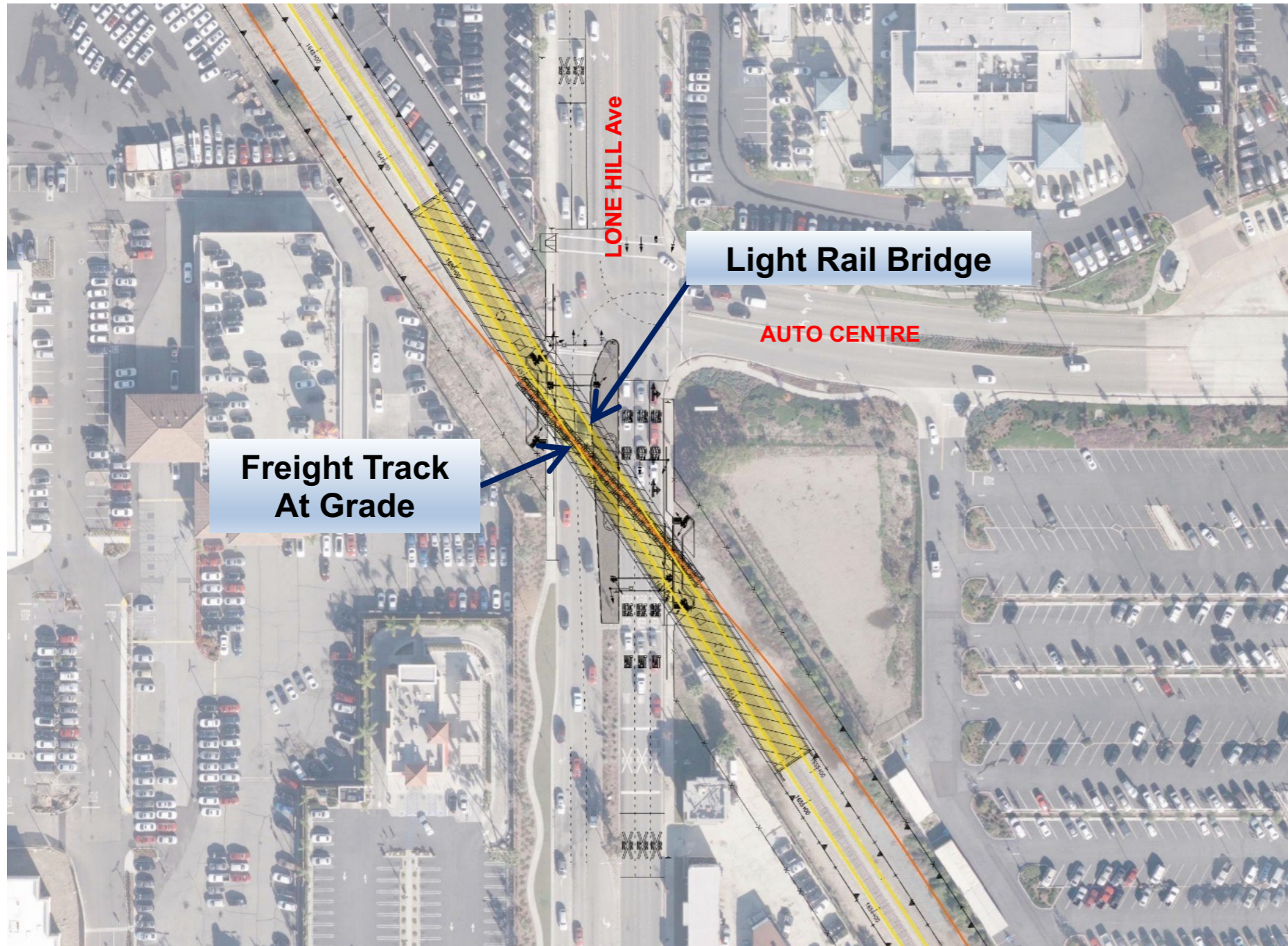


Lone Hill Ave Roadway Modifications



LONE HILL ROADWAY MODIFICATIONS

- New Light Rail Bridge
- Freight Remains At Grade
- Modified Street Medians
- Modified Traffic Signal



Foothill Gold Line

Lone Hill Ave View, Looking North



AECOM

Simulation is based on bridge design as of May 2021 and is not final.

LONE HILL - VISUAL SIMULATION 1
MAY 26, 2021



Foothill Gold Line