



Foothill Gold Line

KIEWIT-PARSONS, A JV

-Glendora to Pomona-

NOTICE: Water Mainline Replacement Project

**WATERLINE WITHIN THE RAILROAD CORRIDOR
BEGINNING EAST OF BARRANCA AVE. (CITY OF GLENDORA)
JANUARY 5 - MARCH 5, 2021**

CONSTRUCTION ACTIVITY

As part of construction for the 9.1-mile, four-station Foothill Gold Line light rail project from Glendora to Pomona, crews will be working on the north side between Barranca Ave. and Valencia St. to install a new 42" underground water pipeline. Crews will be working in the Arboreta Community, south of the public walking path.

WHEN

Starting Tuesday, January 5th and continuing daily thru Friday, March 5th, waterline installation operations will be performed daily Monday - Saturday, from 7:00 AM – 5:30 PM.

WHERE

Construction activities will take place north and south of the Arboreta Community wall. Crews will enter community only from the railroad right-of-way, south of the community entrance on Bennett Ave. The public walking path will remain open and accessible through construction.

WHAT TO EXPECT

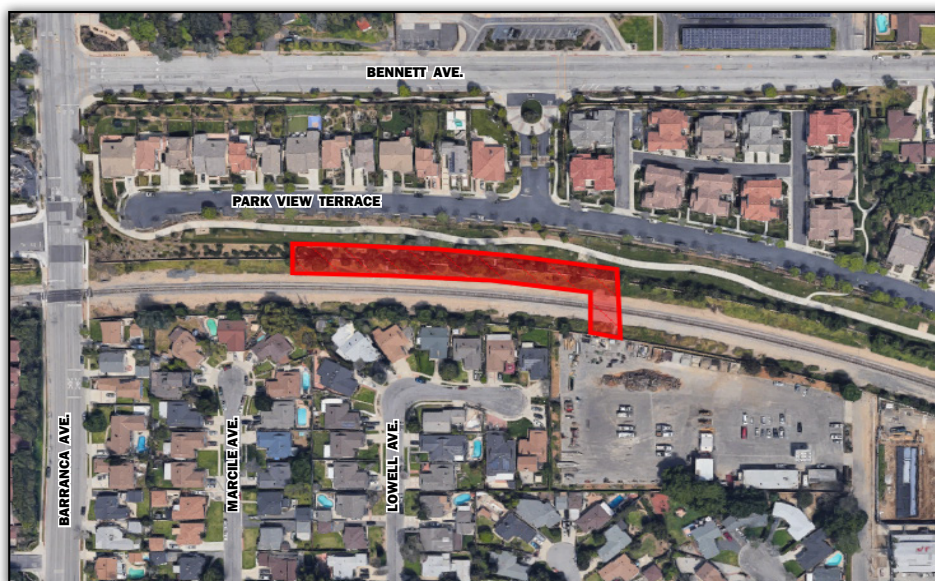
A portion of the cinder block wall will be removed and rebuilt for the waterline installation. Noise from construction equipment will be produced near the active work zones. Watering equipment will be utilized for dust control where needed.

STAY SAFE

Please obey all posted construction signs and do not enter the construction work zone.

STAY AHEAD

To stay ahead of construction, sign up for alerts at:
www.foothillgoldline.org



QUESTIONS?

Project Construction Questions Hotline: (626) 513-5788 **Email:** CommunityRelations@Kiewit-Parsons.com
General Project Questions: (626) 471-9050 **Email:** PublicAffairs@Foothillgoldline.org

**Construction schedules are subject to change for various reasons, including, but not limited to, weather conditions and unforeseen delays.*