



Foothill Gold Line

Board of Directors Meeting

July 22, 2020

12:00 PM

Agenda Item 7b

Construction Communications Program

Action:

Lisa Levy Buch, Chief Communications and Strategic Planning Officer to provide the report.



Communication Program Requirements

- KPJV is responsible for implementing a comprehensive, proactive communications program that communicates early and regularly with a broad group of stakeholders. The program must include:
 - ✓ Use of traditional and new media tools
 - ✓ Opening and staffing public-accessible outreach offices (Glendora and La Verne)
 - ✓ Coordination of, and participation at stakeholder meetings, presentations, and briefings
 - ✓ Development of public information materials
 - ✓ Creation of construction-related status signage
 - ✓ Distribution of public notices
 - ✓ Early and regular communication through mailings/emailings, neighborhood walks, activity center outreach, etc.
 - ✓ Staff support for the Authority's overall community relations program

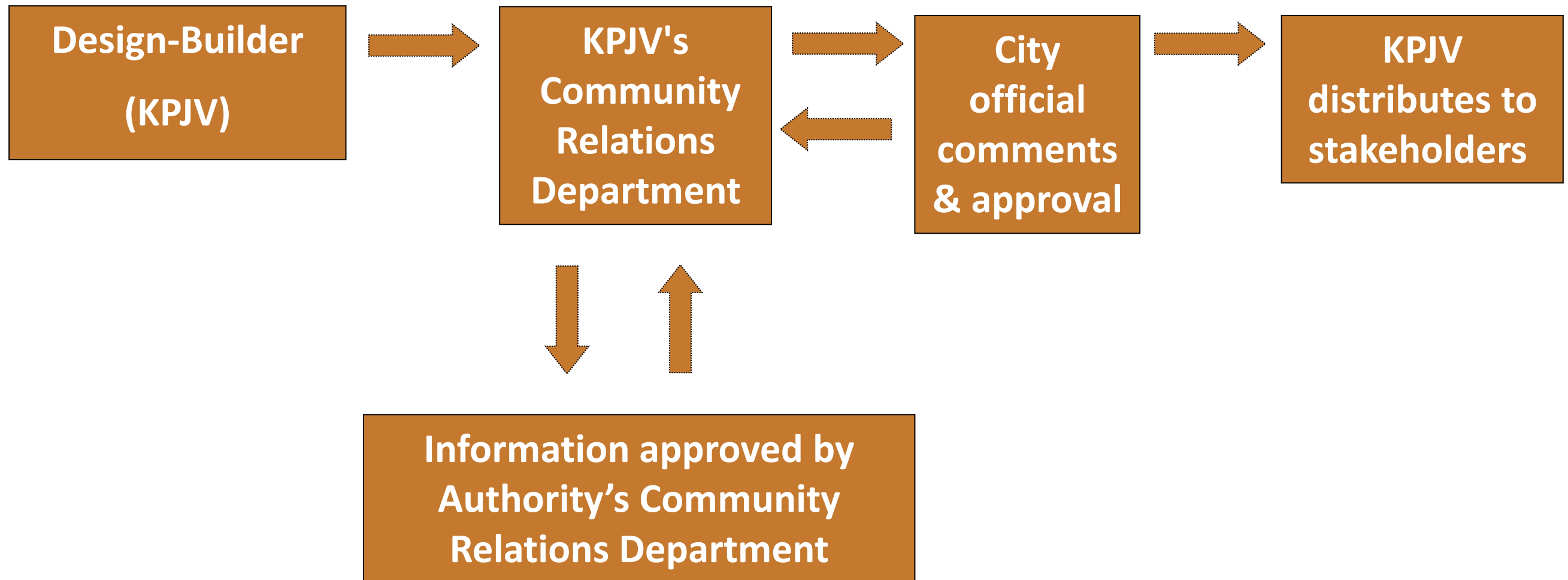
KPJV's Communications Program

Objective:

- Keep stakeholders (i.e., public, businesses, cities, local agencies, elected officials, community-based organizations, media) informed regarding activities on the Project and to work to accommodate their input
 - Effectively communicate Project information with “one voice” to all stakeholders in partnership with the Construction Authority
 - Provide stakeholders with accurate and timely information using multiple communication tools
 - Incorporate input from stakeholders into design and construction plans
 - No surprises

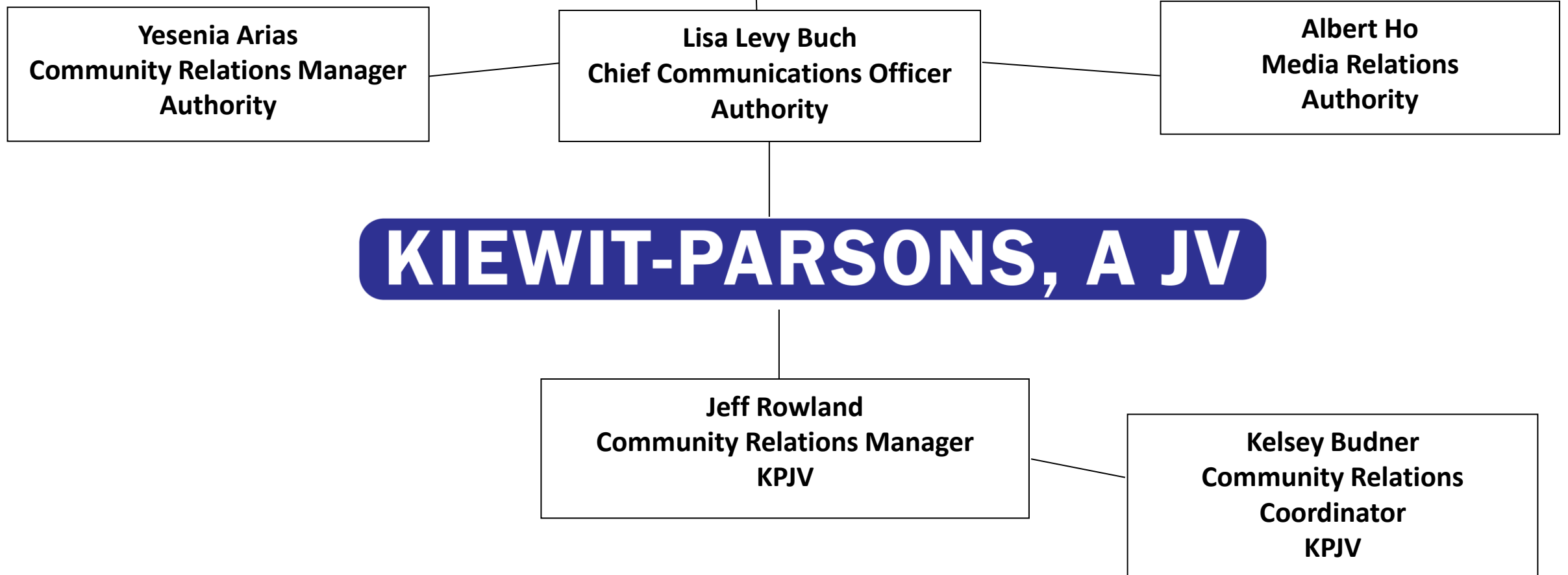


Information Dissemination



Kiewit Parsons Joint Venture (KPJV) is responsible for the implementation of this program and coordinating with the Construction Authority to present a seamless message representative of the Project as a whole.

Program Implementation



Reaching Key Audiences

Stakeholders/Affected Groups	On-Line/ Direct			Meetings/ Events				Media			Information				
	Social Media Postings	Email Notices	Direct Mailing Notices	Stakeholder Events	Online Meeting	Monthly City Meeting	Area Walks, One-on-One Meetings	Media Information	Press Kit	Advertisements	Fact Sheets/Newsletter	Signs	Billboards	Information Hotline	Public Accessible Office
Business Groups	X	X		X	X					X	X			X	
Small Businesses (Store Fronts)	X	X	X	X	X		X			X	X	X	X	X	X
Large Business/ Manufacturing Facilities	X	X		X	X		X			X	X	X	X	X	
City Officials	X	X		X	X	X					X		X	X	
City Street Users	X	X			X		X			X	X	X	X	X	
Emergency Responders	X	X				X						X		X	
Faith Based Groups	X	X	X	X	X		X			X	X			X	
Institutions/Schools	X	X	X	X	X		X			X	X	X		X	
Media Outlets	X			X	X			X	X		X			X	
Pedestrians												X	X	X	
Residents	X	X	X		X		X			X	X	X	X	X	X
Residential/Community Organizations	X	X		X	X					X	X			X	X
Utility Owners	X	X		X		X					X			X	

Outreach Activities

- Construction Hotline/Email
- Construction Notices, distributed:
 - E-Alerts
 - Community walks
 - City websites
 - Authority website
- E-News Updates
- Twitter, Facebook and Blog Update
- Community-Accessible Offices
- Construction Safety Program for Schools and Community
- On-Line Construction Maps
- Project Signage



Foothill Gold Line **KIEWIT-PARSONS, A JV**

-Glendora to Pomona-

NOTICE: Full Street Closure
GLADSTONE ST. AT RAILROAD CROSSING (CITY OF SAN DIMAS)
JULY 10, 2020 - SEPTEMBER 30, 2020
UPDATED WORK HOURS: 6:00AM - 10:00PM

CONSTRUCTION ACTIVITY
 Crews will be fully rebuilding the railroad crossing on Gladstone St. (San Dimas) as part of the 9.1-mile Foothill Gold Line light rail project. **This work requires a full closure of Gladstone St. at the railroad crossing for approximately 3 months.**

WHEN
 Starting Friday, July 10 (and continuing thru September 30, 2020) Gladstone St. will be fully closed to thru-traffic at the railroad crossing 24 hours a day/7 days a week. Lone Hill Ave. (just west of the crossing) and Amelia Ave. (east of the crossing) will remain open and accessible by way of detour routes (see map below).

TRAFFIC ADVISORIES
 • Gladstone St. will be fully closed to vehicular and pedestrian traffic at the railroad crossing.
 • Local access to homes, businesses, schools and medical facilities on Gladstone St., east and west of the closure, will be maintained at all times.

PLAN YOUR ROUTE AND BE PREPARED
 • A detour route (see map below) will be in place during the closure and signage will be posted. Please follow detour signs.
 ✓ Lone Hill Ave. (northbound and southbound) will remain open to thru-traffic and will serve as the main detour route
 ✓ Allen Ave./Auto Centre Dr. (eastbound and westbound) will remain open to thru-traffic.
 ✓ San Dimas Ave. (northbound and southbound) will remain open to thru-traffic.

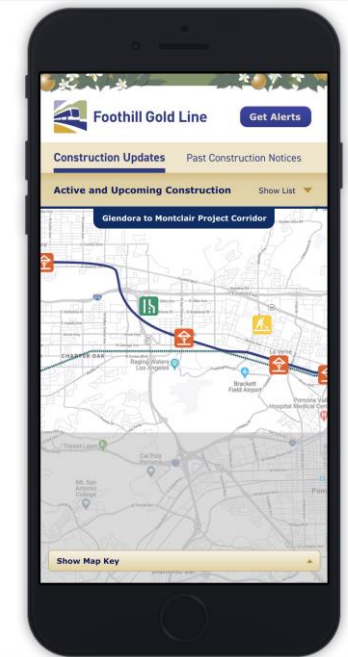
NOTE TO RESIDENTS / BUSINESS OWNERS
 • Noise from construction equipment will be produced near the active work zones.
 • Bus stops may be temporarily relocated, for more information:
 • Foothill Transit Bus: (800) RIDE-INFO/ (800) 743-3463 or foothilltransit.org
 • MTA Bus: (323) GO-METRO/ (323) 466-3876 or www.metro.net

STAY SAFE
 Please obey all posted construction signs and do not enter the construction work zone.
Para información en español por favor llame o envíe un mensaje de texto a (626) 513-5788.

QUESTIONS?
 Project Construction Questions Hotline: (626) 513-5788 Email: CommunityRelations@Kiewit-Parsons.com
 General Project Questions: (626) 471-9050 Email: PublicAffairs@FoothillGoldLine.org

Stay ahead of construction, sign up for alerts: www.foothillgoldline.org

*Construction schedules are subject to change for various reasons, including, but not limited to, weather conditions and unforeseen delays.



Foothill Gold Line **KIEWIT-PARSONS, A JV**

Construction thru 2024
Call or Text the Hotline: (626) 513-5788
Email: CommunityRelations@Kiewit-Parsons.com

Sign up for alerts at: www.foothillgoldline.org

Introductory Letter Sent to 26,000+



May 31, 2020

RE: Foothill Gold Line Update: Major Construction starts Early August

Dear Neighbor:

The start of major construction for the Foothill Gold Line light rail project from Glendora to Pomona is beginning in early August 2020. The four-year construction project will extend light rail service nine miles east of the current terminus in Azusa (at the APU/Citrus College Station), and add four new stations – one in each of the cities of Glendora, San Dimas, La Verne and Pomona. The \$1.5 billion project is being mostly funded by LA County's Measure M; with additional funding from a State of California SB1 program grant and residual LA County Measure R funds remaining after completion of the Pasadena to Azusa segment in 2015. The project is overseen by the Foothill Gold Line Construction Authority (Construction Authority) and is being built by the design-build team of Kiewit Parsons, a Joint Venture (KPJV).

Over the next four years there will be a significant amount of construction activity on the railroad corridor and on adjacent city streets where the light rail tracks will cross. The purpose of this letter is two-fold:

- 1) Let you know that construction activities will be starting soon (including work by utility companies and others in the weeks ahead of major construction starting in August); and
- 2) Provide the following contact information for key community relations team members available to answer your questions now and in the future:

Construction-Related Questions/Concerns:

Kelsey DePaola
Construction Community Relations
Kiewit-Parsons, JV (design-builder)
(626) 513-5788
CommunityRelations@Kiewit-Parsons.com

General Foothill Gold Line Project Questions:

Yesenia Arias
Community Relations Manager
Foothill Gold Line Construction Authority
(626) 305-7012
YArias@foothillgoldline.org

The Construction Authority and KPJV are committed to doing all we can to keep you and the entire community informed of construction-related activities. From emailing construction alerts of upcoming street closures and other major impactful activities to those who register to receive them, to posting signage ahead of closures, to hand-delivering construction notices to those homes and businesses most directly impacted by a construction activity, the Construction Authority and KPJV will do our best to not surprise you with construction.

If you haven't already, we strongly encourage you to sign up to receive construction alerts and project updates. It takes less than a minute and signing up now will keep you informed as this project moves into major construction. We hope you will go to www.foothillgoldline.org and sign-up today!

We appreciate your cooperation as we build this important project for our region. Don't hesitate to contact us with questions.

Yours truly,

Lisa Levy Buch
Chief Communications Officer
Foothill Gold Line Construction Authority

Jeff Rowland
Public Relations Manager
Kiewit-Parsons, JV

YES - SIGN ME UP TO RECEIVE Foothill Gold Line UPDATES

The Foothill Gold Line will extend the existing Metro Gold Line light rail system to the cities of Glendora, San Dimas, La Verne, Pomona, Claremont and Montclair. Work has begun, with major construction starting in 2020.

Sign up now to receive updates on this important project by mailing back this postage-paid card, or by signing up online at www.foothillgoldline.org.

Questions? (626) 471-9050 or visit www.foothillgoldline.org

***E-mail (required)**

*Full Name

Address

*City *Zip

CONSTRUCTION COMMUNITY RELATIONS

CONSTRUCTION QUESTIONS: **KIEWIT-PARSONS, A JV**

HOTLINE CALL / TEXT (626) 513-5788

EMAIL

COMMUNITYRELATIONS@KIEWIT-PARSONS.COM

PUBLIC INFORMATION OFFICE

2100 E ROUTE 66, SUITE 200, GLENDORA, CA 91740



Foothill Gold Line

QUESTIONS?
Project Construction Questions Hotline: (626) 513-5788 **Email:** CommunityRelations@Kiewit-Parsons.com
General Project Questions: (626) 471-9050 **Email:** PublicAffairs@foothillgoldline.org
Visit our Public Information Office located at 2100 E. Route 66 Suite 200, Glendora, CA 91740



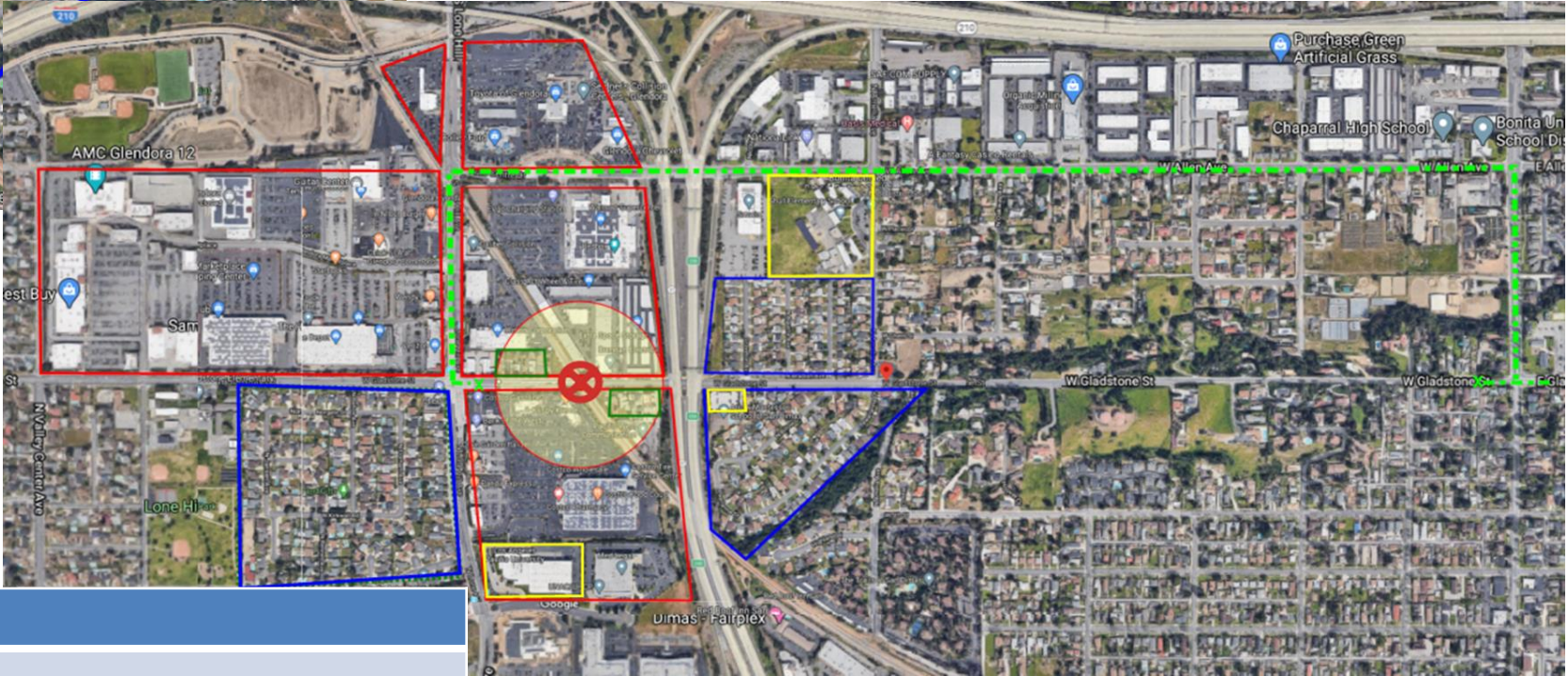
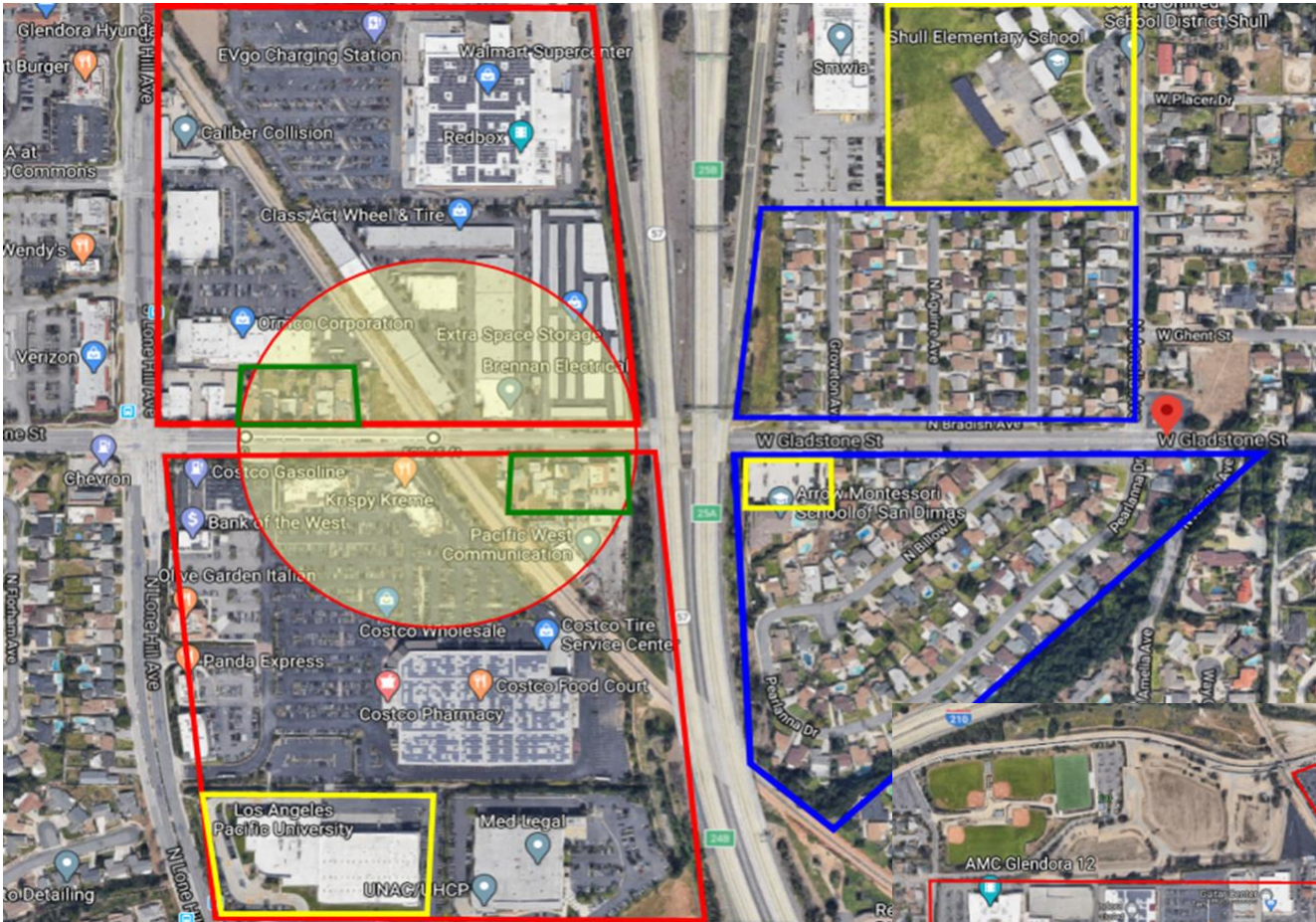
Foothill Gold Line

Outreach Plan for Each Major Activity



- First Six Months: Grade Crossing Improvements (3-month full street closures):
 - Gladstone Street (San Dimas) starts July 13
 - Barranca Avenue (Glendora) starts Aug 3 (SoCal Gas started June 29)
 - Glendora Avenue (Glendora) starts Sept 14 (SoCal Gas may start earlier)
 - Wheeler Avenue (La Verne). starts Oct 13
 - A Street (La Verne), Fulton Avenue (Pomona) and Eucla Avenue (San Dimas) - all planned to start Dec 22

Gladstone Street Outreach Plan



LEGEND:

Red & Yellow Circle = 500' notification radius of primary outreach

Red Box = Commerical / industrial

Green Box = Residential

Blue Box = Potential secondary outreach

Yellow Box = Other property types

Barranca Avenue Outreach Plan



LEGEND:

- Red & Yellow Circle = 500' notification radius of primary outreach
- Red Box = Commerical / industrial
- Green Box = Residential
- Blue Box = Potential secondary outreach
- Yellow Box = Other property types

Agenda Item 7b

Construction Communications Program

Action:

That the Board receive and file the Construction Communications Program.

Questions or Comments

