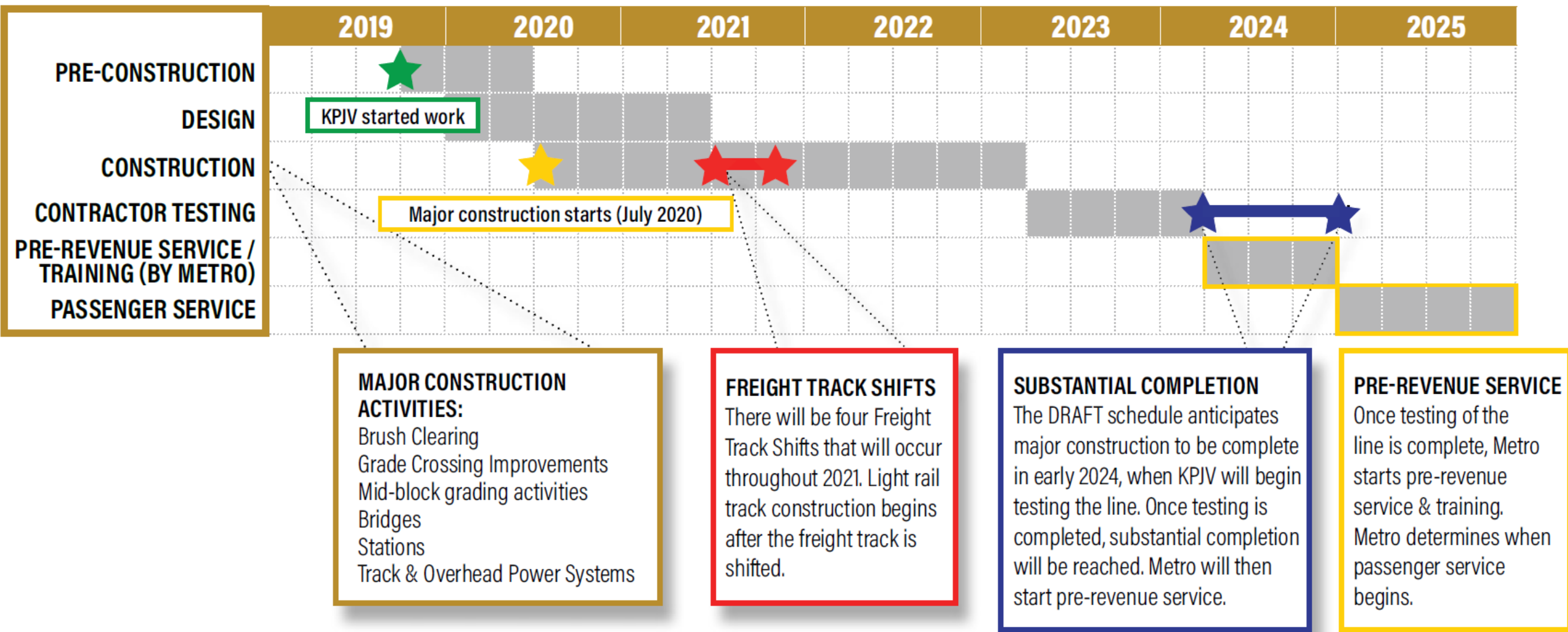


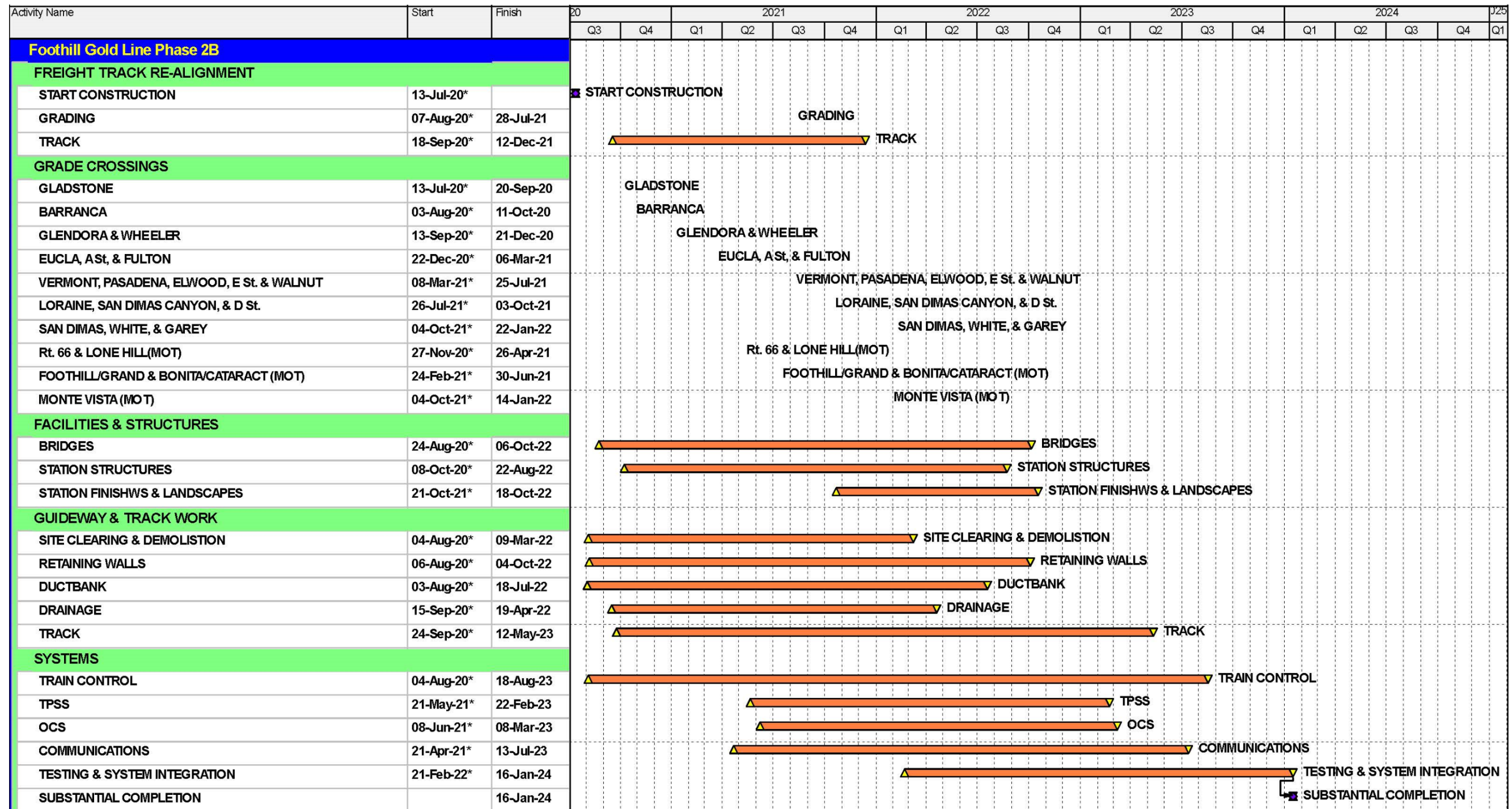
# Summary Baseline Project Schedule



The Baseline Schedule is an aggressive schedule that aspires to reach Substantial Completion one year ahead of the January 2025 contractual date.

NOTE: If additional funding is secured by October 2021 to include the contract option to Montclair, the project will be completed altogether to Montclair in 2028 and this schedule will be adjusted.

# Baseline Schedule – Additional Detail



NOTE: The Baseline Schedule advances the start of major construction to mid-July 2020 and anticipates substantial completion (Glendora to Pomona Segment) one year ahead of the January 2025 contractually date.