



Foothill Gold Line

Metro Gold Line Foothill Extension Construction Authority

406 East Huntington Drive, Suite 202
Monrovia, CA 91016-3640

p 626.471.9050 f 626.471.9049
www.foothillgoldline.org

Agenda Item: 6.a.

TO: Chair and Members of the Joint Powers Authority Board
FROM: Habib F. Balian, Foothill Gold Line Chief Executive Officer
DATE: June 14, 2018
SUBJECT: Approval of the April 12, 2018 Joint Powers Authority Board Meeting Minutes

RECOMMENDATION:

That the Joint Powers Authority Board approve the April 12, 2018 minutes.

Executive Officer:

Habib F. Balian
Chief Executive Officer

DRAFT UNTIL APPROVED BY JPA Board of Directors

**Foothill Gold Line
Joint Powers Authority (JPA) Board of Directors**

Foothill Gold Line Office
404 E. Huntington Drive
Maria Dalton Community Room
Monrovia, California 91016

**BOARD MEETING MINUTES
April 12, 2018
11:30 A.M.**

1. Call to Order

Chair Pedroza called the meeting to order at approximately 11:47 a.m.

2. Pledge of Allegiance

Robin Carder led the Pledge of Allegiance.

3. Roll Call:

Quorum (8)		JPA Members
Present	Absent	
X		A R C A D I A
		Roger Chandler
	—	Sho Tay - Alternate
Present	Absent	A Z U S A
	X	Uriel Macias
	—	Angel Carrillo – Alternate
Present	Absent	C L A R E M O N T
X		Sam Pedroza (Chair)
	—	Larry Schroeder – Alternate
Present	Absent	D U A R T E
X		Liz Reilly
	—	Tzeitel Paras-Caracci – Alternate
Present	Absent	G L E N D O R A
X		Mendell Thompson
	—	Gary Boyer – Alternate
Present	Absent	I R W I N D A L E
X		H. Manuel Ortiz
	—	Mark A. Breceda – Alternate
Present	Absent	L A V E R N E
X		Robin Carder (Vice Chair)
	—	Charles Rosales – Alternate

DRAFT UNTIL APPROVED BY JPA Board of Directors

Present	Absent	M O N R O V I A
X		Larry Spicer
	—	Gloria Crudgington – Alternate
Present	Absent	M O N T C L A I R
X		Bill Ruh
Present	Absent	O N T A R I O
X		Paul Leon
	—	Debra Dorst-Porada – Alternate
Present	Absent	P A S A D E N A
X		Gene Masuda
Present	Absent	P O M O N A
	X	Tim Sandoval
	—	Robert Torres– Alternate
Present	Absent	S A N D I M A S
	X	Denis Bertone
	X	John Ebiner – Alternate
Present	Absent	S B C T A
	X	Vacant
	—	Curt Hagman – Alternate
	—	Doug Boyd (Representative) - <i>does not count towards quorum</i>
	—	Jeff Sorenson (Representative) - <i>does not count towards quorum</i>
Present	Absent	S O U T H P A S A D E N A
	—	Robert S. Joe
X		Michael Cacciotti – Alternate
12	3	
Foothill Gold Line Staff:		
Habib F. Balian, Chief Executive Officer		
Chris Burner, Chief Project Office		
Mitch Purcell, Chief Contracting Officer and In-House Counsel		
Lisa Levy Buch, Chief Communications Officer		
Chris Lowe, Clerk of the Board and Admin. Services Director		

4. Public Comments on Items On/Off Agenda

Chair Pedroza invited Public Comments for items on or off the Agenda; hearing and seeing none, the Public Comment portion was closed.

5. CEO's Monthly Report

Mr. Balian reviewed the Critical Path Schedule for Claremont to Montclair which indicated that the Board approved the RFP C2002 short-list and staff released the Draft RFP for Industry Review in February 2018; staff expects to present the SCRRA Master Cooperative Agreement to the Board in April 2018; finalize the BNSF Agreement in April 2018; release the RFP C2002 in May 2018; complete work with the Grade Crossing Working Group by June 2018; finalize

DRAFT UNTIL APPROVED BY JPA Board of Directors

Gap Funding by June 2018; submit USACE permits in July 2018; Award DB2 Contract in October 2018 and finalize SBCTA Funding and Construction Agreement by January 2021.

Item received and filed.

6. Consent Calendar:

- a. Approval of the February 15, 2018 Foothill Gold Line Joint Powers Authority Board Minutes**
- b. Receive and File Draft April 25, 2018 Metro Gold Line Foothill Extension Construction Authority Board Agenda**

Chair Pedroza requested a motion to approve the Consent Calendar. Board Member Leon made a motion to approve the Consent Calendar which was seconded by Vice Chair Carder and approved unanimously.

7. General Board Items:

- a. Consideration of Nominations to the San Gabriel Valley Council of Governments (SGVCOG) to serve on Metro Gold Line Foothill Extension Construction Authority Board**

Chair Pedroza provided the report. Chair Pedroza indicated that the SGVCOG appointments to the Foothill Gold Line Board, which include a member and an alternate, were due to expire in June. Chair Pedroza indicated that the current SGVCOG representatives are Sam Pedroza as member and Tim Sandoval as an alternate.

Chair Pedroza opened the floor for nominations of for the SGVCOG positions.

Vice Chair Carder nominated Sam Pedroza for the member position which was seconded by Board Member Ruh and approved unanimously.

Board Member Chandler nominated Tim Sandoval as the alternate which was seconded by Board Member Cacciotti and approved unanimously.

- b. Receive and File Oral Report on Phase 2B Parking Update**

Mr. Balian introduced Lisa Levy Buch, Chief Communications Officer, to provide the presentation below.

DRAFT UNTIL APPROVED BY JPA Board of Directors

Slide 1

Parking Update Since Last Meeting

- Metro board approved Supportive Transit Parking Program Master Plan (STPP) at their January 2018 meeting
- Metro finalized the Phase 2B parking study and provided recommendations based on:
 - Station locations (mid-point suburban typology)
 - Impact of implementing STPP (assumes \$3/day parking fee)
 - Flexibility for future parking demand and land use changes
- Metro's recommendations were sent to the Construction Authority in March for consideration (letter from Phil Washington and final report)
- Construction Authority sent Metro recommendations to 2B cities and provided update to the board of directors (March board meeting)
- Requested city meetings to discuss



Slide 2

Metro Recommendations

	GLENDORA	SAN DIMAS	LA VERNE	POMONA**	CLAREMONT**	TOTALS
PROPOSED INVENTORY IN FEIR	420 SPACES	450 SPACES	600 SPACES	850 SPACES	1,260 SPACES	3,580 SPACES
PARKING DEMAND MODEL OUTPUT*	302 SPACES	289 SPACES	299 SPACES	530 SPACES	539 SPACES	1,959 SPACES
DIFFERENCE	118 SPACES	161 SPACES	301 SPACES	320 SPACES	721 SPACES	1,621 SPACES

* Based on average of output at \$3,000/day.

** Includes Metrolink Parking Demand

** Proposed Inventory in FEIR - Claremont as terminus station

- Metro recommendations:
 - Build no more than 2,000 total parking spaces (five LA County stations)
 - Build surface parking lots, rather than structures, to provide flexibility for future land uses, parking demand changes and parking management solutions, and lower construction/maintenance costs
 - Metro is available to assist cities with parking management strategies to reduce any overspill issues, if they arise



Slide 3

Next Steps for Construction Authority

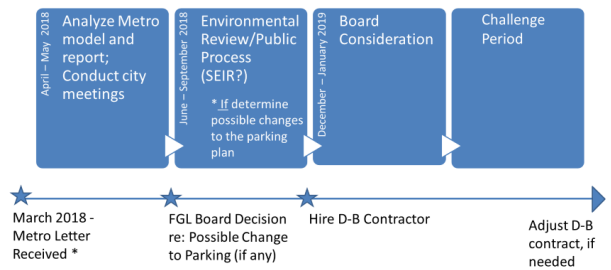
Importantly, this letter presents only recommendations from Metro, and the final decision for the number of parking spaces to be constructed for Phase 2B shall reside with the Gold Line Foothill Extension Authority,

- Construction Authority typically builds what Metro wants; however, the agency is conducting an independent review of the model and report
- Looking to find solutions that take city concerns into consideration - city by city solutions
- No decisions have been made at this point and may not be known for months
- Any changes to the parking plan for 2B stations would likely require environmental review and board approval
- Parking will not slow down design-build procurement



Slide 4

Anticipated Timeline for Next Steps



* NOTE: 2B Project FEIR Certified March 2013



Slide 5

Impact on Design-Build Procurement

- Parking will not slow down the design-build procurement
- Parking is among last project elements to be constructed
- Separate Notice to Proceed for both parking design and construction
- RFP includes EIR parking number
- If changes to the parking are decided, likely deal with through deductive change order (however, may be dealt with differently)



DRAFT UNTIL APPROVED BY JPA Board of Directors

Ms. Levy Buch indicated that staff will be meeting with the Phase 2B cities to get their feedback.

Board Member Reilly noted that there are large reductions in what was approved in the EIR and in Metro's recommendation.

Various Board Member commented on the need for parking and their concern for paid parking and possible impacts on local communities and businesses.

Item received and filed.

c. Consideration of JPA Annual Dues

Mr. Balian provided the report. Mr. Balian indicated that the JPA Agreement from March 2004, established Annual Dues to be paid by each member annually. Mr. Balian indicated that the anticipated budget for each fiscal year is approximately \$18,000 per year or \$1,500 per JPA meeting. Mr. Balian indicated that the dues cover items including board member dues, meeting meal expense, insurance and limited legal fees if necessary. Mr. Balian indicated that staff is recommending annual dues be collected over the next two years with a report back after the second year on the need to continue or to suspend. Mr. Balian indicated that Construction Authority dollars cannot be used for JPA items.

Board Member Carder indicated that while she is very supportive of the JPA, she feels that due to some of the financial issues within the City of La Verne that she would not be able to support the item.

Chair Pedroza requested a motion for Consideration of JPA Annual Dues. Board Member Chandler made a motion to approve the reinstatement of JPA Annual Dues for a period of two years which was seconded by Board Member Spicer. The Board approved the item with Board Member Carder voted against the item.

d. Receive and File: Monthly Update for March 2018

Mr. Balian introduced Chris Burner, Chief Project and Planning Officer to provide the report.

Mr. Burner indicated that with regard to the Glendora to Montclair segment, staff continued to attend coordination meetings with corridor City staff; continued negotiating the MCA with SCRRA for design and construction; preparing for final phase of geotechnical process (parking structures and TPSS sites); CPUC continued reviewing four (4) grade crossing applications packages; Authority submitted four (4) more grade crossing applications to CPUC for their review; Short-listed four (4) potential design-builders for the Phase 2B Alignment project; Released Alignment Industry Review package to Metro, SCRRA, SBCTA, corridor cities, and the four (4) short-listed potential design-builders; continued design of parking facilities and stations; completed updated noise and vibration analysis; continued work on composite utility drawings; finalized agreement with Golden State Water; continued negotiating agreement with Metropolitan Water District; completed

DRAFT UNTIL APPROVED BY JPA Board of Directors

review of various DB1 submittals; DB1 contractor preparing to start construction work in April 2018; DB1 contractor and Authority staff continued attending coordination meetings with utility owners and corridor City staff; and DB1 contractor continued permitting process, including steps for acquiring permit from SCRRA.

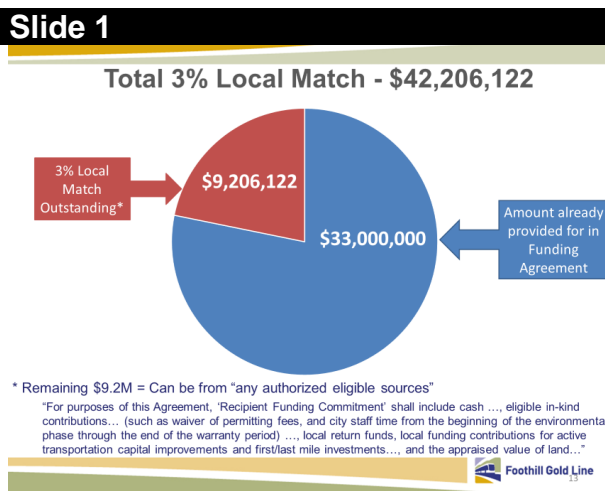
Mr. Burner indicated that over the next 6 to 12 months, staff will complete final phase of geotechnical work; receive approval of the Type Selection for SR-57 and I-210 from Caltrans; receive approval of CPUC applications; execute MCAs with remaining third parties; obtain USACE permits; DB1 acquire all necessary permits prior to starting work; and release Request for Proposals for Phase 2B Alignment Design-Build Project.

Item received and filed.

e. Receive and File Oral Report on Status of 3% Local Match

Mr. Balian requested Mitch Purcell to provide the report. Mr. Purcell indicated that the Construction Authority has a Funding Agreement with Metro. Mr. Purcell indicated that in the agreement, that the amount of local contribution shall be \$42.2 million dollars. Mr. Purcell indicated that already stipulated in the Funding Agreement that \$33.0 million in local contributions has been satisfied. Mr. Purcell indicated that only \$9.2 million is remaining for local match. Mr. Purcell indicated that \$33.00 million is comprised of staff and city time made toward the project – from 2010 until the end of the project.

Mr. Purcell indicated that once the CAP and Trade dollars are received on April 30, 2018, staff will need to meet with Metro again to amend the Funding Agreement due to the addition of new dollars. Mr. Purcell indicated that during that process, the \$9.2 million dollars will be addressed. Mr. Purcell indicated that there are several options or “buckets” where those dollars could be allocated to greatly reduce and/or eliminate the remaining \$9.2 million.



Slide 2

Construction Authority Statutory Mandate

132410. (a) The authority has all of the powers necessary for planning, acquiring, leasing, developing, jointly developing, owning, controlling, using, jointly using, disposing of, designing, procuring, and building the project, including, but not limited to, all of the following:

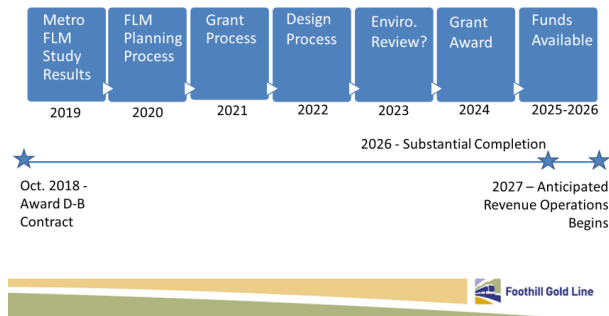
- (1) Acceptance of grants, fees, allocations, and transfers of funds from federal, state, and local agencies, as well as private entities.
- (2) Acquiring, through purchase or through eminent domain proceedings, any property necessary for, incidental to, or convenient for, the exercise of the powers of the authority.
- (3) Incurring indebtedness, secured by pledges of revenue available for project completion.
- (4) Contracting with public and private entities for the planning, design, and construction of the project. These contracts may be assigned separately or may be combined to include any or all tasks necessary for completion of the project.
- (5) Entering into cooperative or joint development agreements with local governments or private entities. These agreements may be entered into for the purpose of sharing costs, selling or leasing land, air, or development rights, providing for the transferring of passengers, making pooling arrangements, or for any other purpose that is necessary for, incidental to, or convenient for the full exercise of the powers granted the authority. For purposes of this paragraph, "joint development" includes, but is not limited to, an agreement with any person, firm, corporation, association, or organization for the operation of facilities or development of projects adjacent to, or physically or functionally related to, the project.
- (6) Relocation of utilities, as necessary for completion of the project.

Foothill Gold Line

DRAFT UNTIL APPROVED BY JPA Board of Directors

Slide 3

Likely Timeline for First/Last Mile Process



Item received and filed.

8. Board Member Comments

None.

9. Adjournment

Chair Pedroza adjourned the meeting at approximately 12:46 p.m.



Foothill Gold Line

Metro Gold Line Foothill Extension Construction Authority

406 East Huntington Drive, Suite 202
Monrovia, CA 91016-3640

p 626.471.9050 f 626.471.9049
www.foothillgoldline.org

Agenda Item: 6.b.

TO: Chair and Members of the Joint Powers Authority Board
FROM: Habib F. Balian, Foothill Gold Line Chief Executive Officer
DATE: June 14, 2018
SUBJECT: Receive and File the June 13, 2018 Metro Gold Line Foothill Extension Construction Authority Board Agenda

RECOMMENDATION:

That the Joint Powers Authority Board Receive and File the June 13, 2018 Metro Gold Line Foothill Extension Construction Authority Board Agenda.

Executive Officer:

Habib F. Balian
Chief Executive Officer



Foothill Gold Line

Metro Gold Line Foothill Extension Construction Authority

406 East Huntington Drive, Suite 202
Monrovia, CA 91016-3640

p 626.471.9050 f 626.471.9049
www.foothillgoldline.org

Board Members:

Doug Tessitor
Chair
Appointee,
City of Pasadena

Sam Pedroza
Vice Chair
Council Member,
City of Claremont
Appointee, SGVCOG

Marisol Rodriguez
Member
Alternate Appointee,
City of Los Angeles

Paul S. Leon
Member
Mayor,
City of Ontario
Appointee, City of
South Pasadena

John Fasana
Member
Mayor,
City of Duarte
Appointee, LACMTA

Gene Masuda
Member, Non-Voting
Council Member,
City of Pasadena
Appointee, City of
Pasadena

Carrie Bowen
Member, Non-Voting
District 7 Director,
Caltrans
Gubernatorial
Appointee

Daniel M. Evans
Member, Non-Voting
Appointee, City of
South Pasadena

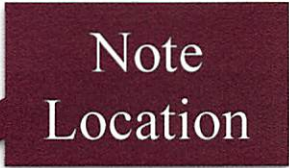
Alan D. Wapner
Member, Non-Voting
Mayor Pro Tem,
City of Ontario
Appointee, SBCTA

Metro Gold Line Foothill Extension Construction Authority Board

406 E. Huntington Drive, Suite 202
Monrovia, California 91016

BOARD MEETING Community Room

(enter through 404 E. Huntington Drive)



AGENDA

**June 13, 2018
12:00 pm**

NOTICE IS HEREBY GIVEN that the Metro Gold Line Foothill Extension Construction Authority Board Meeting is to be held on June 13, 2018, at 12:00 pm at the Foothill Gold Line Offices, 406 E. Huntington Drive, Suite 202, Monrovia, CA 91016. The agenda for the meeting will consist of the following:

Items:

- 1. Call to Order**
- 2. Pledge of Allegiance**
- 3. Roll Call**
- 4. Public Comments on Items On/Off Agenda**
- 5. Closed Session**

CONFERENCE WITH LEGAL COUNSEL

Existing Litigation: Government Code section 54956.9(d)(1)
City of San Dimas v Metro Gold Line Foothill Extension Construction
Authority, et al, - Case No. BS171326

- 6. CEO's Monthly Report**

Executive Officer:

Habib F. Balian
Chief Executive Officer

Any disclosable public records related to an open session item on a regular meeting agenda and distributed by the Construction Authority to all or a majority of the Construction Authority Board less than 72 hours prior to that meeting are available for public inspection at 406 E. Huntington Drive, Suite 202, Monrovia, CA during normal business hours.

7. Consent Calendar Items:	Committee(s) Review
	<hr/>
a. Approval of April 25, 2018 Minutes of Metro Gold Line Foothill Extension Construction Authority Board of Directors Meeting	
b. Adoption of Foothill Extension Financial Plan for Phase 2B - Revision 15	Finance and Construction
c. Authorize the CEO to Execute a Master Cooperative Agreement with the Southern California Regional Rail Authority	Finance and Construction
d. Approval of Caltrans Work Authorization to support the Foothill Gold Line Project through FY 2019 in an amount not to exceed \$141,000	Finance and Construction
e. Authorize the CEO to Execute Amendment 4 to Contract No. C1154 with Achieve Technology Services, LLC for Information Technology Consulting Services in an amount not to exceed \$360,000	Finance

- 8. General Board Items:**
- a. Receive and File Report on Request for Proposals (RFP) C2002 - Phase 2B Alignment Design-Build Project
 - b. Receive and File Project Technical Update Oral Report on Project Delivery Approach
 - c. Receive and File Report on Project Labor Agreements (PLA)
 - d. Adoption of Foothill Gold Line Fiscal Year 2019 Operating Budget
 - e. Consider approval of Southern California Regional Rail Authority (SCRRA) Interim Work Authorization for a portion of fiscal year (FY) 2019, in an amount not to exceed \$250,000 to support the Foothill Gold Line project
 - f. Authorize the CEO to Execute Amendment No. 2 to Contract No. C1177 in an amount not to exceed \$9,000,000 with Hill International Inc. for Fiscal Year 2019 Program Management Services
 - g. Biennial Review Conflict of Interest Code
 - h. Receive and File Monthly Project Status Update as of May 2018

9. General Counsel's Report

10. Board Member Comments

11. Adjournment

Next Meeting: July 25, 2018 @ 12:00 pm
Foothill Gold Line Community Room
406 E. Huntington Drive, Suite 202
Monrovia, California 91016



Foothill Gold Line

Metro Gold Line Foothill Extension Construction Authority

406 East Huntington Drive, Suite 202
Monrovia, CA 91016-3640

p 626.471.9050 f 626.471.9049
www.foothillgoldline.org

Agenda Item: 7.a.

TO: Chair and Members of the Joint Powers Authority Board
FROM: Habib F. Balian, Chief Executive Officer
DATE: June 14, 2018
SUBJECT: Receive and File Report on Request for Proposals (RFP) C2002 - Phase 2B Alignment Design-Build Project

RECOMMENDATION:

That the Joint Powers Authority Board (JPA) receive and file the report on the Request for Proposals (RFP) C2002 - Phase 2B Alignment Design-Build Contract.

SUMMARY:

On February 14, 2018, the Construction Authority's Board of Directors approved a shortlist of firms who would be eligible to submit proposals in response to the Request for Proposals (RFP) C2002 Phase 2B Alignment Design-Build Contract. On May 30, 2018, staff released the RFP to the pre-qualified "shortlist" of teams as well as to various stakeholders, including cities along the alignment, LACMTA and SCRRA. The RFP includes ninety-thousand pages of updated engineering and project information, including detailed drawings of every aspect of the 12.3-mile project.

BACKGROUND:

On November 8, 2017, the Construction Authority issued a Request for Statements of Qualifications (RFQ) for design-build teams interested in pursuing design and construction of the Phase 2B Alignment Design-Build Project, which includes the alignment and other work between the Phase 2A terminus in Azusa to the city of Montclair. The purpose of the RFQ was to create a "shortlist" of teams who would be eligible to receive the subsequent Request for Proposals (RFP) C2002 - Phase 2B Alignment Design-Build Contract.

Consistent with the procurement schedule, on or before January 24, 2018, the Construction Authority received Statements of Qualifications from seven design-build teams. The Construction Authority completed its review of the submittals, per the process set out in the RFQ. The recommended shortlist of teams was approved by the Board of Directors on February 14, 2018 (in alphabetical order):

- AECOM | Stacy and Witbeck JV;
- Herzog Rados Lane, a Joint Venture;
- Kiewit-Parsons, a JV; and

Executive Officer:

Habib F. Balian
Chief Executive Officer

- San Gabriel Valley Transit Partners (STP), a Joint Venture of Fluor and Ames

Immediately thereafter, the Construction Authority issued an industry review draft of the RFP to the shortlisted teams as well as to various stakeholders, including cities along the alignment, LACMTA and SCRRA. After receiving industry review comments, the Construction Authority met individually with each team to present additional information and to listen to any technical concerns. The RFP has been revised based on comments received and additional analysis performed.

Issuance of the RFP is a critical step toward award of C2002 Phase 2B Alignment Design-Build Contract. The subsequent steps are anticipated to occur as indicated in the table below.

Activity	Due Date
Issue RFP	May 30, 2018
Last date to submit questions and requests to the Authority	August 1, 2018
Last date to conduct meetings with stakeholders to discuss public information-related issues	August 1, 2018
Last date anticipated for the Authority to respond to questions and requests (if at all)	August 22, 2018
Proposals Due	September 12, 2018
Revised Proposals Due (if applicable)	TBD
Board considers award / execution of contract	October 24, 2018 or TBD (if applicable)
Distribution of Execution Version of Contract (anticipated)	October 31, 2018 or TBD (if applicable)
Notice to Proceed	TBD



Foothill Gold Line

Metro Gold Line Foothill Extension Construction Authority

406 East Huntington Drive, Suite 202
Monrovia, CA 91016-3640

p 626.471.9050 f 626.471.9049
www.foothillgoldline.org

Agenda Item: 7.b.

TO: Chair and Members of the Joint Powers Authority Board
FROM: Habib F. Balian, Chief Executive Officer
DATE: June 14, 2018
SUBJECT: Receive and File Project Technical Update Oral Report on Project Delivery Approach

RECOMMENDATION:

That the Joint Powers Authority Board Receive and File Project Technical Update Oral Report on Project Delivery Approach.

Executive Officer:

Habib F. Balian
Chief Executive Officer



Foothill Gold Line

Metro Gold Line Foothill Extension Construction Authority

406 East Huntington Drive, Suite 202
Monrovia, CA 91016-3640

p 626.471.9050 f 626.471.9049
www.foothillgoldline.org

Agenda Item: 7.c.

TO: Chair and Members of the Joint Powers Authority Board
FROM: Habib F. Balian, Chief Executive Officer
DATE: June 14, 2018
SUBJECT: Receive and File Presentation on Real Property Acquisition

RECOMMENDATION:

That the Joint Powers Authority Board Receive and File Presentation on Real Property Acquisition.

Executive Officer:

Habib F. Balian
Chief Executive Officer



Foothill Gold Line

Metro Gold Line Foothill Extension Construction Authority

406 East Huntington Drive, Suite 202
Monrovia, CA 91016-3640

p 626.471.9050 f 626.471.9049
www.foothillgoldline.org

Agenda Item: 7.d.

TO: Chair and Members of the Joint Powers Authority Board
FROM: Habib F. Balian, Chief Executive Officer
DATE: June 14, 2018
SUBJECT: Biennial Review of Conflict of Interest Code

RECOMMENDATION:

That the Joint Powers Authority (JPA) Board direct staff to have the Joint Powers Authority Conflict of Interest Code reviewed and file a written statement as to the outcome of the review with the Clerk of the Board, no later than September 5, 2018.

SUMMARY:

The Political Reform Act of 1974, found in Government Code Section 81000, et. Seg., (the Act) requires State and local government agencies to adopt a Conflict of Interest Code identifying officials, employees and consultants within the agency who make governmental decisions based on the positions they hold. The law requires public officials, employees and consultants in those designated positions to report their financial interests and places restrictions upon certain types of loans and gifts that they may receive while in office.

The Act, further requires the JPA Board to biennially review and update, if necessary, its Conflict of Interest Code (the Code). On or before July 1 of each even-number year, the JPA shall direct a review of the Code to ensure it reflects the current structure of the JPA in regards to filing of Economic Interest (Form 700).

Staff is recommending that the JPA Board review the written statement regarding the review no later than September 5, 2018. Staff will place an amended Code on the Board Agenda prior to October 1, 2018, if any changes are required.

BUDGET IMPLICATIONS:

None.

Executive Officer:

Habib F. Balian
Chief Executive Officer



Foothill Gold Line

Metro Gold Line Foothill Extension Construction Authority

406 East Huntington Drive, Suite 202
Monrovia, CA 91016-3640

p 626.471.9050 f 626.471.9049
www.foothillgoldline.org

Agenda Item: 7.e.

TO: Chair and Members of the Joint Powers Authority Board
FROM: Habib F. Balian, Foothill Gold Line Chief Executive Officer
DATE: June 14, 2018
SUBJECT: Receive and File Monthly Project Status Update as of May 2018

RECOMMENDATION:

That the Joint Powers Authority Board Receive and File Monthly Project Status Update as of May 2018.

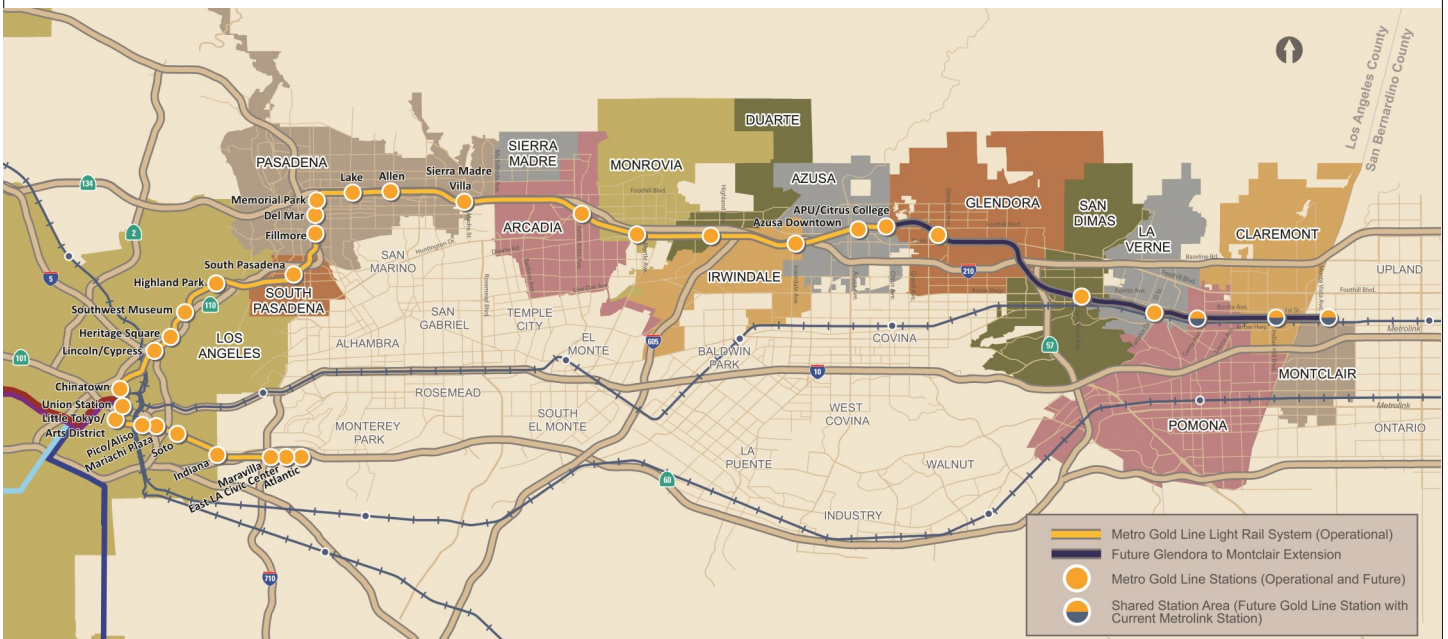
Executive Officer:

Habib F. Balian
Chief Executive Officer

Foothill Gold Line Project

Monthly Project Status Report

May 2018



Foothill Gold Line

Connecting Los Angeles, the San Gabriel Valley and Inland Empire



TABLE OF CONTENTS

FOOTHILL GOLD LINE PROJECT STATUS

Project Description	3
Glendora to Montclair Segment	4
Management Issues	4
Key Activities Completed This Period	5
Key Future Activities	6
Pasadena to Azusa Segment	7
Key Activities Completed This Period	7
Key Future Activities	8
Alignment Change Management Log	9
Parking Facilities and Enhancements Contract Status	10
Parking Facilities and Enhancements Change Management Log	16
Financial Status	18



FOOTHILL GOLD LINE PROJECT DESCRIPTION

The Authority's mandate is to plan, design and construct a 37-mile light rail link between Downtown Los Angeles and Claremont. In addition, the San Bernardino County Transportation Authority (SBCTA) has requested that planning be extended one mile inside San Bernardino County to the City of Montclair and then possibly to Ontario Airport.

The Metro Gold Line Foothill Extension Project (Foothill Gold Line) corridor includes the cities of Pasadena, Arcadia, Monrovia, Duarte, Irwindale, Azusa, Glendora, San Dimas, La Verne, Pomona, Claremont, and Montclair; and the counties of Los Angeles and San Bernardino (Figure 1). The Foothill Gold Line is estimated to cost approximately \$2.155 billion.

The Foothill Gold Line will be built in two segments to align effectively with projected cash flows and financial capacity constraints. The first segment is defined from the Sierra Madre Villa Station in Pasadena to the city of Azusa. Revenue service along this segment began on March 5, 2016. The second segment will include an extension of the first segment from Glendora to the City of Montclair with construction projected to be completed in the year 2026.



Figure 1: Foothill Gold Line Alignment



GLENDORA TO MONTCLAIR
MANAGEMENT ISSUES

SCRRA COORDINATION ISSUES

As the Construction Authority entered the advanced planning phase of the Glendora to Montclair project, SCRRA did not provide the appropriate level of cooperation or partnering that is required to make the Glendora to Montclair project a success. Staff acted to address this issue by establishing a weekly executive partnering meeting with SCRRA, Metro and the Authority. Through this weekly executive partnering meeting much progress has been made towards addressing the issues associated with SCRRA. Staff is cautiously optimistic that the fundamental issues have been corrected and the risk linked with SCRRA has been reduced to one that is manageable. However, staff will continue to closely monitor and report on this risk.



GLENDORA TO MONTCLAIR
KEY ACTIVITIES COMPLETED THIS PERIOD

Authority and City staff continued to hold coordination meetings to discuss the project

Completed negotiating the Master Cooperative Agreement (MCA) with SCRRA for design and construction

CPUC continued reviewing eight (8) grade crossing application packages

Submitted three (3) grade crossing application packages to CPUC for their review

Released Request for Proposals for the Phase 2B Alignment Design-Build Project

Authority began evaluating Metro's request to reduce parking

Finalized agreement with Golden State Water

Continued negotiating agreement with Metropolitan Water District

Received 1602 permit from California Department of Fish and Wildlife – Region 5

Continued reviewing submittals from the Utility Relocation Project (DB1) contractor

DB1 contractor completed permitting process, including acquiring a permit from SCRRA

DB1 completed work at the following sites: Carrion Water and West of Wheeler Water

DB1 contractor continued to attend coordination meetings with utility owners and corridor City staff



GLENDORA TO MONTCLAIR

KEY FUTURE ACTIVITIES

Complete evaluation of Metro's request to reduce parking

Receive approval of CPUC applications

Execute MCAs with remaining third parties

Obtain USACE permits

Grant Substantial Completion to DB1 contractor

Award RFP C2002 Design-Build Contract



PASADENA TO AZUSA
KEY ACTIVITIES COMPLETED THIS PERIOD

DB contractor closed out all remaining warranty items



PASADENA TO AZUSA
KEY FUTURE ACTIVITIES

Authority staff to transfer final remaining parcel to Metro

Authority staff to transmit final record documents to Metro



Change Management Log

Date: 8/31/2017

Page: 1 of 7

Project: C1135 Alignment - FTC Contract #: C1135

Original Contract Amount:	\$485,867,000				
Approved Change Orders:	\$31,097,382	6.40%	Pending Change Orders:	\$0	0.00%
Current Contract Total:	\$516,964,382		Pending Contract Total:	\$516,964,382	6.40%

Change Orders

Number	Change Management	Title	Initiated Date	Approved Date	Outstanding Days	Time Extension	Amount
EXECUTED Change Orders							
001.00	000.00	Interim NTP	11/3/2011	11/3/2011	0		\$0
002.00	013.00	Colorado Bridge Haz Mat	5/17/2012	5/18/2012	1		\$121,382
002.01	013.01	Colorado Bridge HazMat - Final	9/5/2012	9/7/2012	2		\$13,164
003.00	001.00	Sound Wall Deletion - Duarte Road	7/12/2012	7/18/2012	6		(\$74,707)
004.00	018.00	Revise Block Design - CBD Calc	8/23/2012	8/29/2012	6		\$3,986
004.01	018.01	Revise Block Design - CBD Calc - 2	9/5/2013	9/11/2013	6		\$0
005.00	023.00	Wayside Signal Aspect Revision	9/6/2012	9/7/2012	1		\$26,072
005.01	023.01	Wayside Signal "Call On" Function	10/30/2013	11/1/2013	2		\$75,169
006.00	040.00	Arcadia Frieze, Bench-Artist Design	9/6/2012	9/10/2012	4		\$13,683
006.01	040.01	Arcadia Frieze, Bench-Construction	3/7/2013	3/12/2013	5		\$155,894
007.00	019.02	Soils Testing Abutments & Fdns	9/14/2012	9/18/2012	4		\$44,993
008.00	041.00	Unknown Utilities RFCN 005 006 008	9/14/2012	9/18/2012	4		\$132,450
009.00	038.00	Illuminate City Names @ Stations	9/18/2012	9/24/2012	6		\$184,657
010.00	046.00	SGRB - Lead Based Paint Remediation	9/21/2012	9/24/2012	3		\$244,536
011.00	004.00	Station Architectural Changes	10/11/2012	10/12/2012	1		\$443,950
012.00	003.01	Systems and Testing for Added TPSS	12/13/2012	12/14/2012	1		\$1,443,193
013.00	005.02	IDIQ Comm Contract (Rev 2)	12/14/2012	1/22/2013	39		\$698,259
014.00	060.00	Sewer Encasement Changes in Azusa	12/18/2012	1/24/2013	37		\$141,354
015.00	037.02	M&O - Materials Storage Revisions	12/26/2012	1/15/2013	20		\$62,862
015.01	037.03	M&O Storage Shelving Revisions	9/16/2013	9/19/2013	3		\$20,380
016.00	002.00	Relocation of Access Road to 3M Fac	12/26/2012	1/16/2013	21		\$53,814
017.00	025.00	3 Electrical Casings for ALW	2/27/2013	3/1/2013	2		\$219,033
018.00	073.00	Hazardous Abatement at Bridges	1/15/2013	2/6/2013	22		\$1,081,803
019.00	054.00	City of Hope Conduits	1/11/2013	1/22/2013	11		\$34,313
020.00	059.00	Citrus TPSS Transformer Pad Changes	2/6/2013	2/7/2013	1		\$34,536
021.00	075.00	Demo & Replace Palm Dr. Roadway	2/7/2013	2/14/2013	7		\$90,365
022.00	077.00	M&O Differing Site Conditions; Pt 1	2/13/2013	2/15/2013	2		\$66,360
022.01	093.00	M and O DSC T and M Work Part 2	3/8/2013	3/12/2013	4		\$66,625
022.02	103.00	M and O DSC Part 3	3/27/2013	3/28/2013	1		\$35,211
022.03	115.00	DSC at M and O Part 4	5/3/2013	5/7/2013	4		\$5,706
022.04	390.00	M&O DSC - Part 5	7/14/2015	7/21/2015	7		\$7,192
023.00	089.00	Contaminated Soil Abatement	2/26/2013	2/27/2013	1		\$422,068
023.01	019.03	Soil Sampling - Various Foundations	8/1/2017	8/2/2017	1		(\$83,460)
024.00	068.00	Monrovia Sound Wall Panel Change	2/26/2013	2/28/2013	2		(\$24,150)
025.00	052.00	Santa Anita Trail Detour	3/8/2013	3/12/2013	4		\$27,691
026.00	070.00	Block Type Change at M&O Building	3/26/2013	3/26/2013	0		\$35,016
027.00	065.00	M&O IT Changes-Duct Banks/Conduits	3/26/2013	3/26/2013	0		\$88,650
027.01	065.01	M&O IT Changes - Power to WAP	9/4/2013	9/6/2013	2		\$73,049
027.02	065.02	M&O IT Changes - Remaining Work	7/16/2014	7/17/2014	1		\$155,991
027.03	065.04	M&O IT Changes -Furniture Interface	6/18/2015	6/19/2015	1		\$293,896
027.04	065.05	M&O IT Changes-OFCI Eqpt and A/V	7/17/2015	7/21/2015	4		\$380,546
028.00	039.01	Delete Layover Building	4/11/2013	4/12/2013	1		(\$313,832)
029.00	095.00	8in Sanitary Sewer Line- Alameda Av	4/23/2013	4/25/2013	2		\$226,089
029.01	095.01	Alameda Sewer Line Revised Scope	11/22/2013	11/26/2013	4		(\$37,425)
030.00	102.00	M&O-Disconnect Switches, Insulators	4/23/2013	4/25/2013	2		\$67,817



Change Management Log

Project: C1135 Alignment - FTC Contract #: C1135

Change Orders

Number	Change Management	Title	Initiated Date	Approved Date	Outstanding Days	Time Extension	Amount
EXECUTED Change Orders							
031.00	110.00	Rmv Abandoned Utility Line @ Dalton	4/23/2013	4/25/2013	2		\$1,562
032.00	104.00	Highland Ave Abandoned CMP sleeves	5/1/2013	5/3/2013	2		\$15,005
033.00	114.00	Remove contaminated wood culvert	5/3/2013	5/7/2013	4		\$4,714
034.00	128.00	M&O Backup Power/Generator Changes	5/13/2013	5/21/2013	8		\$121,340
035.00	083.00	M&O Vehicle Sanding System Changes	5/21/2013	5/24/2013	3		\$27,463
036.00	006.00	IFS Related Contract Changes	6/7/2013	6/11/2013	4		(\$263,111)
037.00	137.00	CTS Redesign	7/12/2013	7/16/2013	4		\$58,214
038.00	138.00	Segment 4 Safety Manager	7/12/2013	7/16/2013	4		\$157,274
038.01	138.01	Segment 4 Safety manager - Part 2	11/19/2013	11/21/2013	2		\$72,963
038.02	138.02	Segment 4 Safety Manager - Part 3	4/3/2014	4/7/2014	4		\$82,271
038.03	138.03	Segment 4 Safety Manager	8/1/2017	8/2/2017	1		(\$34,468)
039.00	085.00	M&O Drainage System Enhancements	7/19/2013	8/13/2013	25		\$251,579
040.00	067.00	Station Paver Changes	7/23/2013	8/13/2013	21		\$728,340
040.01	067.01	Rebar Changes for Station Pavers	10/28/2013	10/31/2013	3		\$10,586
041.00	112.00	12" Pasadena Waterline Potholes	8/12/2013	8/16/2013	4		\$19,735
042.00	150.00	Demo Abandoned Water Lines @ Dalton	8/12/2013	8/16/2013	4		\$5,937
043.00	007.01	Emer. Backup for Guideway Lighting	8/16/2013	10/1/2013	46		\$359,158
044.00	172.00	Contaminated Wood Culvert Sta. 1202	8/27/2013	8/28/2013	1		\$7,712
045.00	139.00	BLS Changes	8/28/2013	9/4/2013	7		\$110,801
046.00	165.00	Azusa-Alameda Station; 2nd Portal	8/28/2013	9/4/2013	7		\$77,175
047.00	145.00	St. Joseph drainage enhancements	9/4/2013	9/6/2013	2		\$17,592
048.00	149.00	M&O - Lights at NW Corner Park	9/4/2013	9/6/2013	2		\$29,351
049.00	174.00	TPSS #5 Cal-Am Power Conflict	9/4/2013	9/6/2013	2		\$127,260
050.00	171.00	Relocate Access Stair to Foothill	9/4/2013	9/6/2013	2		\$20,276
051.00	173.00	Dalton 8" Water Line Work	9/5/2013	9/12/2013	7		\$35,316
052.00	071.00	Duarte Rd Screen Wall Change	9/5/2013	9/17/2013	12		(\$133,864)
053.00	176.00	Remove Contaminatd Wood-Buena Vista	9/10/2013	9/12/2013	2		\$5,543
054.00	147.00	DECCO Bypass	9/10/2013	9/12/2013	2		\$18,519
055.00	166.00	Foothill Blvd. Water/SD Relocation	9/20/2013	9/20/2013	0		\$127,074
056.00	186.00	Contaminated Wood @ San Gabriel Ave	9/23/2013	9/24/2013	1		\$4,291
057.00	194.00	California/Duarte Water Line Work	10/28/2013	10/31/2013	3		\$220,743
058.00	189.00	Four Utility Changes	10/28/2013	10/31/2013	3		\$14,157
059.00	180.00	Remove/Dispose of ACM E of Highland	10/30/2013	11/1/2013	2		\$29,311
060.00	179.00	CTS Upgrade to OC-192	10/30/2013	11/1/2013	2		\$112,543
060.01	371.00	IDIQ Pricing Error - OC-192 Cards	4/29/2015	5/6/2015	7		\$87,034
061.00	213.00	Irwindale On-ramp Stockpile	11/8/2013	11/21/2013	13		\$200,185
062.00	053.00	Delete Totten Tubes Scope of Work	11/8/2013	11/21/2013	13		(\$143,801)
063.00	146.00	Home Depot Striping and Signing	11/15/2013	11/21/2013	6		\$21,003
064.00	204.00	Unknown Duct Bank @ San Gabriel Ave	11/15/2013	11/21/2013	6		\$1,265
065.00	140.00	M&O-Overhead Work Platform Changes	12/5/2013	12/16/2013	11		\$317,656
066.00	217.00	Buried SD & Headwall, STA 1306+50	12/6/2013	12/17/2013	11		\$1,020
067.00	219.00	Contaminated Soil, Monrovia Station	12/12/2013	12/17/2013	5		\$17,503
068.00	220.00	DSC at Sawpit Wash Abutments	12/12/2013	12/17/2013	5		\$12,668
069.00	188.00	Costco Emergency Gate-Path to POS	1/21/2014	1/22/2014	1		\$19,882
070.00	214.00	M&O - Generator Load Bank	1/21/2014	1/22/2014	1		\$38,092
071.00	224.00	Alameda South Water Line Tie-in	1/30/2014	1/31/2014	1		\$6,330
072.00	202.00	Aesthetic Lighting Provisions-SGRB	2/3/2014	2/4/2014	1		\$27,055
073.00	160.00	Move Mountain Interlocking Bungalow	2/11/2014	2/13/2014	2		\$68,596
074.00	200.00	M&O Parts Carousel Warranty & PM	2/11/2014	2/13/2014	2		\$68,906
075.00	235.00	Remove Contaminated Wood Ties	2/14/2014	2/18/2014	4		\$4,571



Change Management Log

Date: 8/31/2017

Page: 3 of 7

Project: C1135 Alignment - FTC Contract #: C1135

Change Orders

Number	Change Management	Title	Initiated Date	Approved Date	Outstanding Days	Time Extension	Amount
EXECUTED Change Orders							
076.00	234.00	Accelerate Work at California Ave	2/14/2014	2/18/2014	4		\$5,663
077.00	247.00	Line Stop in California	2/18/2014	2/20/2014	2		\$14,524
078.00	201.00	Added Sound Wall, SW of IFS	2/27/2014	2/28/2014	1		\$18,201
079.00	238.00	M&O-MOW Canopy Structural Eval	2/27/2014	2/28/2014	1		\$7,147
079.01	238.01	M&O - MOW Canopy Solar	8/20/2014	8/26/2014	6		\$714,659
080.00	232.00	Car Moving Tractor-Coupler Upgrade	2/27/2014	2/28/2014	1		\$177,145
081.00	242.00	Car Moving Tractor Options/Features	2/27/2014	2/28/2014	1		\$69,099
082.00	091.00	Rockvale Water Line Mitigation	3/4/2014	3/5/2014	1		\$163,750
082.01	091.01	Rockvale Water Line-EIC credit	4/11/2014	4/14/2014	3		(\$5,391)
083.00	251.00	Cut and Move Rail to Segment 1	3/4/2014	3/5/2014	1		\$249,934
084.00	218.00	Delete Equipment at ROC	3/26/2014	3/27/2014	1		(\$91,708)
085.00	239.00	Install Sound Wall Door @ STA. 1169	3/26/2014	3/27/2014	1		\$12,737
086.00	250.00	Change Top Row of Block Wall 1124.1	3/26/2014	3/27/2014	1		\$3,688
087.00	229.00	Irwindale TPSS-Adjust Eqpt. Layout	4/3/2014	4/7/2014	4		\$17,878
088.00	262.00	Provisional Sum Adjustment	4/3/2014	4/7/2014	4		\$0
088.01	262.01	Provisional Sum Adjustment - 2	9/19/2014	9/25/2014	6		\$0
088.02	262.02	Provisional Sum Adjustment - 3	11/12/2014	11/14/2014	2		\$0
088.03	262.03	Provisional Sum Adjustment - 4	3/19/2015	3/19/2015	0		\$0
088.04	262.04	Provisional Sum Adjustment - 5	12/30/2015	12/31/2015	1		\$0
088.05	443.00	Provisional Sum Adjustment - 6	2/12/2016	2/16/2016	4		\$0
088.06	262.06	Provisional Sum Adjustment - 7	8/1/2016	8/1/2016	0		\$0
088.07	262.07	Provisional Sum Adjustment - 8	8/29/2017	8/29/2017	0		(\$42,900)
089.00	261.00	Longer DF Bolts - SGRB	4/3/2014	4/7/2014	4		\$17,331
090.00	169.02	M&O Tramming Table Changes (rev. 2)	4/11/2014	4/14/2014	3		\$54,083
091.00	181.00	Alameda Utility Changes	4/11/2014	4/14/2014	3		(\$9,599)
092.00	241.00	Business Center TPSS Crane Changes	4/23/2014	4/28/2014	5		\$13,655
093.00	276.00	Myrtle Early Completion Incentive	4/23/2014	4/28/2014	5		\$160,000
094.00	254.00	Drainage East of Pasadena Ave.	4/23/2014	4/28/2014	5		\$6,569
095.00	275.00	Remove Rail Ties at 1st/Santa Clara	4/23/2014	4/28/2014	5		\$2,270
096.00	274.00	Buried Concrete @ Huntington Bridge	4/23/2014	4/28/2014	5		\$2,819
097.00	269.00	Asbestos Pipe at Duarte and Myrtle	4/23/2014	4/28/2014	5		\$6,583
098.00	278.00	Abandoned Gas Line at California	5/6/2014	5/7/2014	1		\$8,170
099.00	170.00	M&O Car Wash Betterments	5/6/2014	5/7/2014	1		\$166,144
100.00	223.00	M&O-Volume Control for PA Speakers	5/6/2014	5/7/2014	1		\$38,105
101.00	283.00	Track Work Around at Mountain Ave	5/6/2014	5/7/2014	1		\$29,996
102.00	284.00	Install 115# Buffer Rails in Seg. 1	5/6/2014	5/7/2014	1		\$29,442
103.00	230.00	Azusa-Citrus Ped Crossing Operation	5/6/2014	5/7/2014	1		\$84,183
104.00	231.00	Red Signal Violation Indication	6/3/2014	6/3/2014	0		\$335,134
105.00	253.00	Remove Stem Wall along Duarte Rd.	6/11/2014	6/12/2014	1		\$37,527
106.00	271.00	DVR Changes	7/16/2014	7/17/2014	1		\$181,301
107.00	260.00	M&O Supplemental Fire Water System	7/16/2014	8/4/2014	19		\$1,642,824
108.00	163.00	1st/Santa Clara Grade X-ing Changes	7/25/2014	7/30/2014	5		\$156,177
109.00	164.00	M&O Body Shop Changes	7/25/2014	8/4/2014	10		\$488,598
110.00	256.00	Monrovia North Bunglow LCP Changes	7/25/2014	7/30/2014	5		\$125,313
111.00	237.00	M&O-Signaling System Changes	7/29/2014	8/4/2014	6		\$1,133,746
112.00	252.00	Irwindale Security Kiosk Provisions	8/4/2014	8/6/2014	2		\$178,044
112.01	252.01	Irwindale Security Kiosk - Part 2	2/9/2015	2/11/2015	2		\$47,168
112.02	252.02	Irwindale Security Kiosk - Credit	7/14/2015	7/21/2015	7		(\$47,168)
113.00	281.00	M&O - Accent Colors	8/4/2014	8/6/2014	2		\$26,928
114.00	305.00	Lead Paint, Foothill Median Barrier	8/18/2014	8/20/2014	2		\$5,690



Change Management Log

Date: 8/31/2017

Page: 4 of 7

Project: C1135 Alignment - FTC Contract #: C1135

Change Orders

Number	Change Management	Title	Initiated Date	Approved Date	Outstanding Days	Time Extension	Amount
EXECUTED Change Orders							
115.00	270.00	TES Load Flow Simulation	8/19/2014	8/21/2014	2		\$22,399
116.00	203.00	Mayflower Driveway/Wall Credit	8/20/2014	8/26/2014	6		(\$19,138)
117.00	307.00	Contaminated Wood Ties-Santa Anita	8/20/2014	8/26/2014	6		\$3,226
118.00	082.01	M&O / 3M Fence Revisions (rev 1)	9/17/2014	9/25/2014	8		\$886,650
119.00	314.00	Mountain Early Completion Incentive	9/17/2014	9/24/2014	7		\$80,000
120.00	301.00	Santa Anita Avenue Bridge Artwork	9/17/2014	9/25/2014	8		\$57,224
121.00	313.00	Additional Traffic Signal Testing D	9/19/2014	9/25/2014	6		\$7,875
122.00	320.00	Remove Asbestos Pipe at Virginia	11/12/2014	11/14/2014	2		\$9,485
123.00	303.00	Additional Anti-Graffiti Coating	12/8/2014	12/8/2014	0		\$63,727
124.00	326.00	Santa Anita Avenue Bridge Lighting	12/8/2014	12/8/2014	0		\$208,633
124.01	326.01	Santa Anita Bridge Lighting-Part 2	1/16/2015	1/19/2015	3		\$5,744
124.02	380.00	Santa Anita Ave. Bridge Lighting-3	7/14/2015	7/21/2015	7		\$68,775
125.00	335.00	M&O - Interior Wall Revisions	12/18/2014	12/19/2014	1		\$43,786
126.00	304.00	M&O Lobby Aesthetic Changes	12/18/2014	12/19/2014	1		\$128,047
127.00	292.00	M&O - Guard House Changes	12/19/2014	12/19/2014	0		\$65,463
128.00	339.00	Mountain Ped. Crossing Changes	1/8/2015	1/12/2015	4		\$96,159
129.00	340.00	Business Center TPSS Drainage	1/16/2015	1/19/2015	3		\$249,959
130.00	255.00	Virginia TPSS Access Road	1/8/2015	1/12/2015	4		\$39,718
131.00	291.00	Eliminate 'Train Coming' Signs	1/8/2015	1/12/2015	4		\$9,325
132.00	322.00	Replace Existing OCS Pole at SMV	1/16/2015	1/19/2015	3		\$27,010
133.00	187.01	Irwindale Ramp Signs	1/20/2015	1/26/2015	6		\$125,015
134.00	346.00	Delay in Setting of Yard Substation	1/20/2015	1/26/2015	6		\$15,181
135.00	344.00	Virginia TPSS-Access for Delivery	1/30/2015	2/2/2015	3		\$67,019
136.00	328.00	Rail Profile Grinding	2/9/2015	2/18/2015	9		\$524,000
136.01	328.01	Rail Profile Grinding - Closeout	11/12/2015	11/17/2015	5		\$44,522
137.00	065.03	M&O Main Building Comm. Room Floors	2/17/2015	2/17/2015	0		\$4,402
138.00	353.00	1st/Santa Clara Noise Mitigations	2/17/2015	2/17/2015	0		\$13,889
139.00	323.00	Add Pavers to Duarte Station W Ramp	2/18/2015	2/18/2015	0		\$31,982
140.00	338.00	M&O-Wheel Truing Machine Car Puller	2/19/2015	2/19/2015	0		\$83,112
141.00	258.00	M&O Tactile Guidance Changes	2/23/2015	2/26/2015	3		\$203,945
142.00	352.00	M&O - Fire Alarm System	2/23/2015	2/26/2015	3		\$238,983
143.00	351.00	Sierra Madre Track Rehab	2/23/2015	2/26/2015	3		\$18,107
144.00	349.00	Remove water line east of Highland	2/23/2015	2/26/2015	3		\$4,648
145.00	360.00	M&O Facility - Yard Control Console	3/2/2015	3/3/2015	1		\$23,158
146.00	359.00	Generators for Testing-SRGB to IRW	3/2/2015	3/3/2015	1		\$6,758
147.00	325.00	Station Identifier Changes	3/23/2015	3/25/2015	2		\$4,712
148.00	345.00	Irwindale Signal Case & Push Button	3/24/2015	3/25/2015	1		\$111,110
149.00	296.00	M&O Service Vehicle Pathways	3/26/2015	3/30/2015	4		\$164,480
149.01	296.01	M&O-Service Vehicle Pathways - 2	6/18/2015	6/22/2015	4		\$4,955
150.00	327.00	M&O Facility-NW Corner Fence & Wall	4/29/2015	5/5/2015	6		\$461,480
151.00	311.00	Abandoned California Water Lines	4/29/2015	5/6/2015	7		\$61,219
152.00	358.00	M&O Facility-Interior Wall Finishes	4/29/2015	5/6/2015	7		\$24,582
153.00	337.00	Grade X-ing Train Signal Changes	4/29/2015	5/6/2015	7		\$136,849
154.00	367.00	M&O NW Corner Hardscape Changes	5/8/2015	5/20/2015	12		\$444,632
155.00	363.00	M&O Early Completion Milestone	5/13/2015	5/20/2015	7		\$215,290
156.00	375.00	M&O - Beaumont Acceleration for TCO	5/14/2015	5/20/2015	6		\$130,681
157.00	357.00	Add APS @ 2 intersections in Duarte	5/15/2015	5/20/2015	5		\$39,826
158.00	257.00	Comm. Changes Parking Structures	6/4/2015	6/4/2015	0		\$186,672
159.00	257.01	Duarte Parking Lot ETEls and CCTVs	6/4/2015	6/4/2015	0		\$289,578
160.00	364.00	M&O - MOW Track Fouling Issue	6/4/2015	6/4/2015	0		\$309,417



Change Management Log

Date: 8/31/2017

Page: 5 of 7

Project: C1135 Alignment - FTC Contract #: C1135

Change Orders

Number	Change Management	Title	Initiated Date	Approved Date	Outstanding Days	Time Extension	Amount
EXECUTED Change Orders							
161.00	376.00	Remove Hazardous Waste at Angeleno	6/4/2015	6/4/2015	0		\$4,635
162.00	383.00	M&O - WTM elect changes in pit	6/4/2015	6/4/2015	0		\$19,063
163.00	381.00	M&O - Elevator Inspector Upgrades	6/4/2015	6/4/2015	0		\$12,200
164.00	382.00	M&O - Fire Alarm System Upgrades	6/11/2015	6/15/2015	4		\$109,631
164.01	389.00	M&O - Fire Alarm System Upgrades-2	6/18/2015	6/22/2015	4		\$109,920
164.02	427.01	Add Modifications to the Fire Alarm	12/29/2015	12/30/2015	1		\$30,102
165.00	385.00	M&O-replace LRV access stairs	6/11/2015	6/15/2015	4		\$9,519
166.00	384.00	M&O-NW Corner Added Paving & Curb	6/11/2015	6/15/2015	4		\$19,095
167.00	391.00	M&O Main Entrance Changes	7/14/2015	7/21/2015	7		\$209,772
168.00	306.00	Close Fence Gaps to Adj. Buildings	7/14/2015	7/21/2015	7		\$19,939
169.00	377.00	Pedestrian Grade Crossing Mods	7/14/2015	7/21/2015	7		\$31,469
170.00	343.00	Striping/Signs at Station Ped Xings	7/14/2015	7/21/2015	7		\$267,488
171.00	362.00	M&O - Move East Lobby Wall	8/12/2015	8/13/2015	1		\$45,156
172.00	394.00	Intersection Changes at Highland an	8/14/2015	8/14/2015	0		\$25,146
173.00	393.00	Relocation of Buena Vista Pole D CS	8/14/2015	8/14/2015	0		\$44,646
174.00	395.00	SCE TPSS Metering Pad Extensions	9/2/2015	9/9/2015	7		\$18,601
175.00	302.00	ETEL/PTEL Faceplate Betterment	10/21/2015	10/21/2015	0		\$49,805
176.00	405.00	Irwindale Ped Crossing Changes	10/21/2015	10/21/2015	0		\$27,617
177.00	407.00	M&O - Main Entrance Driveway Mods	10/21/2015	10/21/2015	0		\$31,406
178.00	404.00	Baldwin & Michillinda Standpipes	10/21/2015	10/21/2015	0		\$7,386
179.00	365.00	Irwindale Ave / I-210 E. Onramp	10/22/2015	11/17/2015	26		\$1,276,869
180.00	414.00	Station Benches & Citrus Guardrail	11/2/2015	11/10/2015	8		\$75,778
181.00	416.00	Housekeeping Pads for Electrical Eq	11/12/2015	11/17/2015	5		\$17,919
182.00	417.00	M&O - Elevated Track Weld Analysis	11/12/2015	11/17/2015	5		\$14,865
183.00	379.00	M&O Flooring Acceleration	12/7/2015	12/10/2015	3		\$5,356
184.00	388.00	M&O Parts Steam Cleaner Change	12/7/2015	12/10/2015	3		\$50,471
185.00	334.00	Peck Road Ramp	12/7/2015	12/10/2015	3		\$208,134
186.00	343.01	Purchase 'Look Both Ways' Signs	12/22/2015	12/30/2015	8		\$167,453
187.00	413.00	Relocate CICs at Stations	12/22/2015	12/30/2015	8		\$466,760
188.00	430.00	Sliding Gate Mod-SI Platform Add	12/23/2015	12/30/2015	7		\$10,394
189.00	431.00	Added Paving LRV Loading Driveway	12/29/2015	12/30/2015	1		\$84,776
190.00	406.00	Move BLS at Azusa-Alameda Ramp	1/14/2016	1/19/2016	5		\$22,422
191.00	300.00	Joseph TPSS Power Feed Credit	1/14/2016	1/19/2016	5		(\$21,723)
192.00	429.00	Power Up for Kinkisharyo	1/25/2016	1/25/2016	0		\$36,801
193.00	387.00	3M Fence Changes	1/25/2016	1/25/2016	0		\$59,468
194.00	402.00	Wheel Truing Machine - Training	1/25/2016	1/25/2016	0		\$6,576
195.00	432.00	Sierra Madre Track Rehab Part 2	2/5/2016	2/18/2016	13		\$15,826
196.00	438.00	Crossing Stick Circuit Logic	2/5/2016	2/18/2016	13		\$25,583
197.00	422.00	Security Guards at Stations-Part 1	2/17/2016	2/18/2016	1		\$179,452
198.00	310.00	UP Tunnel Analysis & Modifications	2/24/2016	2/26/2016	2		\$98,156
199.00	439.00	Construction for UP Tunnel Retrofit	2/24/2016	3/1/2016	6		\$1,020,000
200.00	440.00	Extended Security to Feb 1st 2016	2/24/2016	2/26/2016	2		\$30,141
201.00	372.00	M&O Completion Items	2/26/2016	2/26/2016	0		\$95,578
202.00	435.00	Ballasted Emer. Walkway Widening	3/4/2016	3/8/2016	4		\$186,233
203.00	420.00	M&O Blowdown Pit Grating Changes	3/15/2016	3/15/2016	0		\$97,399
204.00	448.00	Cab Code Changes at Arcadia and SAW	3/21/2016	3/24/2016	3		\$30,051
205.00	447.00	TPSS Electrical Work & Damaged Comp	3/23/2016	3/24/2016	1		\$83,934
206.00	451.00	Lighting for LRV Loading Area-MM Bg	3/23/2016	3/24/2016	1		\$29,968
207.00	434.00	P3010 Vehicle Conflict at MO	3/31/2016	4/4/2016	4		\$118,715
208.00	458.00	Paint Hunt Bridge Exposed Concrete	4/11/2016	4/12/2016	1		\$6,908



Change Management Log

Date: 8/31/2017

Page: 6 of 7

Project: C1135 Alignment - FTC Contract #: C1135

Change Orders

Number	Change Management	Title	Initiated Date	Approved Date	Outstanding Days	Time Extension	Amount
EXECUTED Change Orders							
209.00	456.00	Freight Culvert Signs	4/11/2016	4/12/2016	1		\$16,856
210.00	455.00	AC Walkway Striping	4/11/2016	4/12/2016	1		\$20,079
211.00	457.00	M&O Entrance Sign Changes	4/11/2016	4/12/2016	1		\$10,872
212.00	342.00	Tactile Guidance Tile at Stations	5/6/2016	5/10/2016	4		\$20,232
213.00	366.00	SCRRA Exit Gate Programming Changes	5/11/2016	6/20/2016	40		\$124,557
214.00	401.00	Duracurb Delineators at Crossings	6/2/2016	6/20/2016	18		\$160,134
215.00	333.01	Paint City Name Signs & Lower A8	6/2/2016	6/20/2016	18		\$6,284
216.00	400.00	M&O Fire Tank Punch List Items	6/2/2016	6/20/2016	18		\$11,154
217.00	467.00	Traffic Signal Upgrades	6/2/2016	6/20/2016	18		\$36,402
218.00	396.00	Changes to M&O Landscaping	6/2/2016	6/20/2016	18		\$246,507
219.00	399.00	Landscaping Acceleration at M&O	6/2/2016	6/20/2016	18		\$219,090
220.00	470.00	Citrus Avenue Traffic Signal	6/30/2016	7/5/2016	5		\$396,737
221.00	474.00	Procure MMG100 and MMG35 Generators	7/7/2016	7/19/2016	12		\$127,785
222.00	469.00	Extend Security-Barricades-Etc	7/7/2016	7/19/2016	12		\$29,688
223.00	466.00	Signal Timing Changes on Duarte Rd	7/7/2016	7/19/2016	12		\$6,452
224.00	472.00	Pump Citrus Sumps and Tanks	7/7/2016	7/19/2016	12		\$4,894
225.00	460.00	Palm-Citrus Paint & Anti-Graffiti	7/14/2016	7/19/2016	5		\$7,786
226.00	478.00	Inw Park Lot Fire CIC Cleanup	7/14/2016	7/19/2016	5		\$2,667
227.00	468.00	Railing for AandA Building	7/14/2016	7/19/2016	5		\$3,869
228.00	421.00	Screen Fence at Irwindale Ave UP	7/28/2016	8/1/2016	4		\$156,495
229.00	482.00	UP Tunnel Retrofit Closeout	7/28/2016	8/1/2016	4		(\$302,201)
230.00	462.00	Bollards at California and Mountain	7/28/2016	8/1/2016	4		\$14,299
231.00	452.00	IFS Landscaping	8/4/2016	8/16/2016	12		\$492,242
232.00	477.00	Mods Repairs to ADA Truncated Domes	8/4/2016	8/16/2016	12		\$16,768
233.00	461.00	CCTV in Parking Structure Elevators	8/15/2016	8/17/2016	2		\$5,386
234.00	494.00	Revisions to Striping at Crossings	8/15/2016	8/17/2016	2		\$5,853
235.00	463.00	M&O Main Entrance Addl Fence Panels	8/15/2016	8/17/2016	2		\$14,853
236.00	476.00	LEED Plaque	8/15/2016	8/17/2016	2		\$1,312
237.00	479.00	Remove/Reinstall Fencing at Miller	8/15/2016	8/17/2016	2		\$802
238.00	475.00	M&O Walkway to Motorman Gate	8/15/2016	8/17/2016	2		\$4,125
239.00	473.00	Landscaping 1st-Snta Clara Bungalow	8/15/2016	8/17/2016	2		\$4,389
240.00	481.00	BEI Work Orders	9/22/2016	9/23/2016	1		\$6,078
241.00	500.00	Added SCADA Points to Inverters	9/22/2016	9/23/2016	1		\$23,975
242.00	480.00	Irwindale Ramp Closeout	9/22/2016	9/23/2016	1		\$134,137
243.00	498.00	Olive Tree Trimming	10/17/2016	10/31/2016	14		\$2,095
244.00	378.00	Temp Fire Alarm (FACP) Monitoring	10/17/2016	10/31/2016	14		\$61,801
245.00	489.00	Burke Property at Peck Rd Ramp	10/17/2016	10/31/2016	14		\$52,034
246.00	282.00	Evergreen/Myrtle Mitigation Credit	11/8/2016	11/10/2016	2		(\$65,872)
247.00	084.00	Irwindale/Gladstone Mitigation	11/8/2016	11/10/2016	2		(\$5,905)
248.00	503.00	Shuttle Service at Azusa-Citrus	11/8/2016	11/10/2016	2		\$379,108
249.00	504.00	Citrus Bridge Ret Wall & Weep Holes	11/8/2016	11/10/2016	2		\$28,511
250.00	333.00	Change Wayside Operational Signage	12/1/2016	12/5/2016	4		\$64,147
251.00	499.00	2nd Blank Out Sign Mountain/Duarte	12/1/2016	12/5/2016	4		\$8,122
252.00	487.00	New 1-A Pole-Temp Fence-Power Feed	12/1/2016	12/5/2016	4		\$8,352
253.00	470.01	Citrus Avenue Signal Changes	1/5/2017	1/9/2017	4		\$14,102
254.00	493.00	Hi-Rail Truck & Equipment Rate Adj	1/5/2017	1/9/2017	4		\$19,218
255.00	415.00	Azusa-Alameda Ramp Pavers	1/5/2017	1/9/2017	4		\$206,412
256.00	403.00	Duarte Rd Additional Landscaping	1/5/2017	1/9/2017	4		\$112,932
257.00	505.00	Switch Breakers at M&O Generator	2/16/2017	3/27/2017	39		\$7,682
258.00	488.00	Beaumont Changes at Santa Anita Ave	2/16/2017	2/27/2017	11		\$15,323



Change Management Log

Project: C1135 Alignment - FTC Contract #: C1135

Change Orders

Number	Change Management	Title	Initiated Date	Approved Date	Outstanding Days	Time Extension	Amount
EXECUTED Change Orders							
259.00	418.00	ROW Gate Changes	2/23/2017	2/27/2017	4		\$168,534
260.00	507.00	Replace Stainless Steel Strips @M&O	2/23/2017	2/27/2017	4		\$9,977
261.00	508.00	Miscellaneous TM Work in Monrovia-I	6/1/2017	6/7/2017	6		\$4,238
262.00	502.00	Update Logic for Epic III Failure	6/1/2017	6/7/2017	6		\$44,364
263.00	509.00	Yard Lighting Material Procurement	7/10/2017	7/10/2017	0		\$5,000
264.00	496.00	CPUC Completion Items	7/10/2017	7/10/2017	0		\$41,562
265.00	501.00	Add Costs Incurred on PS03-025	7/10/2017	7/10/2017	0		\$24,586
266.00	510.00	Metro Betterment - Cisco Upgrade	7/31/2017	8/2/2017	2		\$60,615
267.00	512.00	Final Acceptance Deadline Extension	8/30/2017	8/30/2017	0		\$0
268.00	513.00	Credit for Partial SCG Cost	8/30/2017	8/30/2017	0		(\$113,401)
269.00	514.00	Replace Ped Lighting Bollards	8/30/2017	8/30/2017	0		\$92,190
Subtotal:							\$31,097,382
Subtotal:							\$31,097,382
Total:							\$31,097,382



FOOTHILL GOLD LINE FINANCIAL STATUS
Project Operating Budget Summary in Millions of Dollars
May 31, 2018

	(a)	(b)	(c=a-b)	(d)
FINANCIAL PLAN	Current Budget	Funding Committed to Project	Uncommitted Funds	Revenues Received
SCAG	1.0	0.9	0.1	0.9
Interest Income	2.0	2.0	-	2.0
Bridge Replacement	13.9	13.9	(0.0)	13.9
Phase I Carryover	4.0	4.0	-	4.0
Maintenance and Operations Facility	-	-	-	-
Cities	42.2	-	42.2	-
Real Estate - Phase 2	-	-	-	-
State SHA	-	-	-	-
Measure R - 2A	741.0	741.0	-	741.0
Measure R - 2B	96.5	96.5	-	26.9
SBCTA	70.0	3.5	66.5	2.9
Federal TCSP	2.9	2.9	-	2.9
Federal Bus Intermodal Plan	9.0	9.0	-	9.0
Federal New Starts 2004 MTA Passthrough	4.0	4.0	-	4.0
Federal New Starts 2005 MTA Passthrough	0.5	0.5	-	0.5
Federal New Starts 2006 Corridor Study	2.5	2.5	-	2.5
Measure M	1,019.0	1,019.0	-	-
Other - Cap and trade	249.2	249.2	-	-
Other - Grade Separations	50.0	-	50.0	-
Total Revenues	2,307.7	2,148.9	158.8	810.5
	(a)	(b)	(c)	(d=a-b)
	Current Budget	Current Obligation	Current Expenditures	Current Available Balance
EXPENSES				
Program Management and Administration	128.1	120.0	117.4	8.1
Master Cooperative Agreements	48.2	6.0	5.4	42.2
Real Estate 2A including ROW Acq	21.0	21.0	21.0	-
Utility Relocation	-	-	-	-
Hazardous Material/Environmental Serv	-	-	-	-
Special Programs	0.3	0.3	0.3	-
Procurement/Vehicles	60.0	60.0	60.0	-
Construction - IFS	19.8	19.8	19.8	-
Construction - 2A	331.9	331.9	331.9	-
Construction - 2B	1,484.7	69.5	29.5	1,415.2
Construction - 2C	-	-	-	-
Construction - Parking Structures	44.3	44.3	44.3	-
Construction - M&O	47.0	47.0	47.0	-
Maintenance and Operations Facility Land	22.0	22.0	22.0	-
MTA Project Costs	64.0	64.0	64.0	-
Project Reserve	9.0	-	-	9.0
Contingency (Financing)	27.4	27.4	27.4	-
Total Project	2,307.7	833.2	790.0	1,474.5