



**Irwindale Station Bus Improvement Plan**

The Irwindale Station is located next to existing industrial development. As depicted in Figure 3-18, it is recommended that there be a bus stop that accommodates two buses as well as an ADA van stop. The bus stop would be accessible from the west end of the LRT platforms and located on Avenida Padilla partially under the Irwindale Avenue overpass that crosses above the existing railroad (future LRT) tracks. Foothill Transit Route 185 is proposed to be rerouted from its current route on Irwindale Avenue to loop under the overpass from the intersection at Adelante Street.

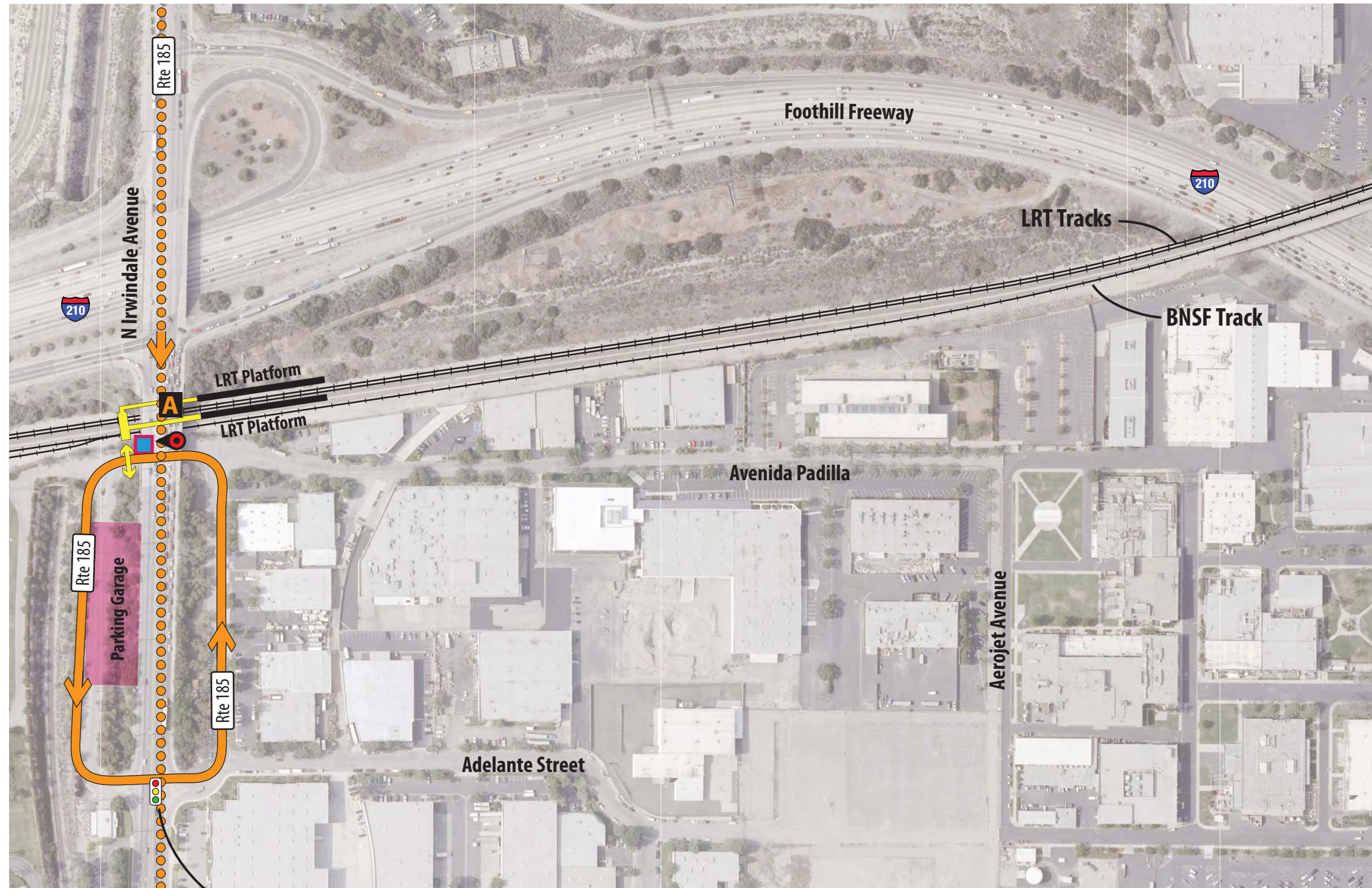
The new stop, shown in Figure 3-19, would have two bus positions and should include a new concrete bus pad as part of the construction of the new sidewalk for the station which will be several feet wider than the existing space between the street and the overpass columns. There is no sidewalk there currently. There are no bus layovers planned at this station unless Route 185 is shortened to terminate here.

An artist’s rendering of the station and bus stop area is shown in Figure 3-20.

**TABLE 3-8: IRWINDALE STATION BUS STOP IMPROVEMENTS (CORRESPONDS TO FIGURE 3-18)**

|  | A |
|--|---|
| Sidewalk width at bus stop to be minimum 8'            | ● |
| Locate bus sign per City and bus operator requirements | ● |
| Install concrete bus pad                               | ● |
| Install bus shelter with seating                       | ● |
| Designate 30-foot curb location for ADA vans           | ● |





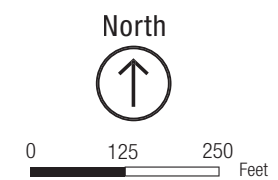
**LEGEND**

- Existing Bus Stop Location
- Proposed Bus Stop Location
- Relocation of Existing Bus Stops
- Proposed ADA Bus Stop Location
- Pedestrian Circulation
- LRT Parking
- LRT Platform
- Rail Tracks
- Existing Bus Route
- Proposed Bus Route
- Proposed Discontinued Bus Route

Parking Requirement at Opening—350 Spaces  
 Parking Requirement in 2025—700 Spaces

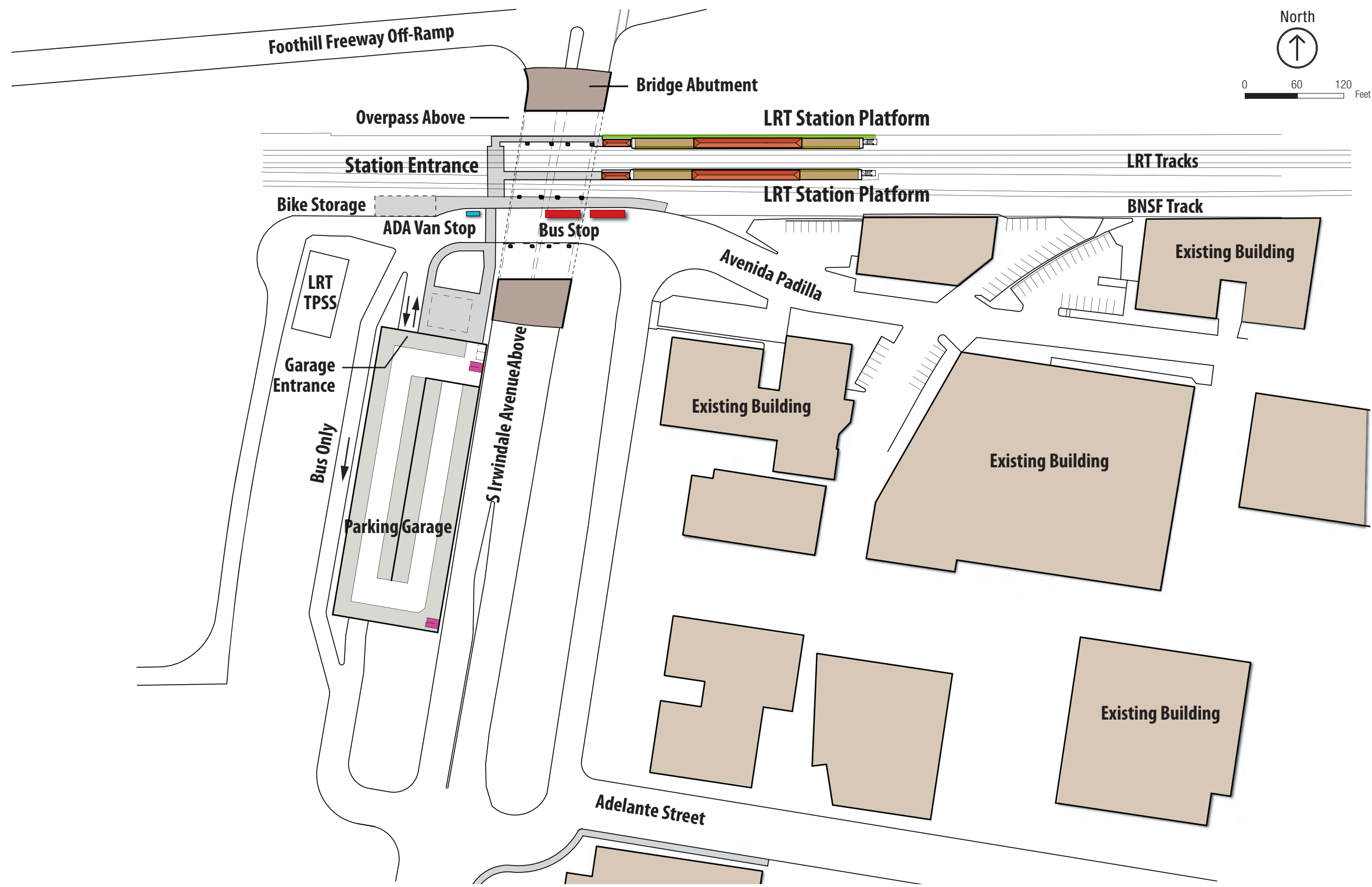
**A** Potential bus interface improvements correspond to Table 3-8

**Adelante Street Intersection to be Signalized**



**Figure 3-18: Irwindale Station Existing and Proposed Bus Interface**





**Figure 3-19: Irwindale Station**  
Bus Improvement Plan







Foothill Extension Bus Interface Plan

**Figure 3-20: Irwindale Station**  
Artist's Rendering