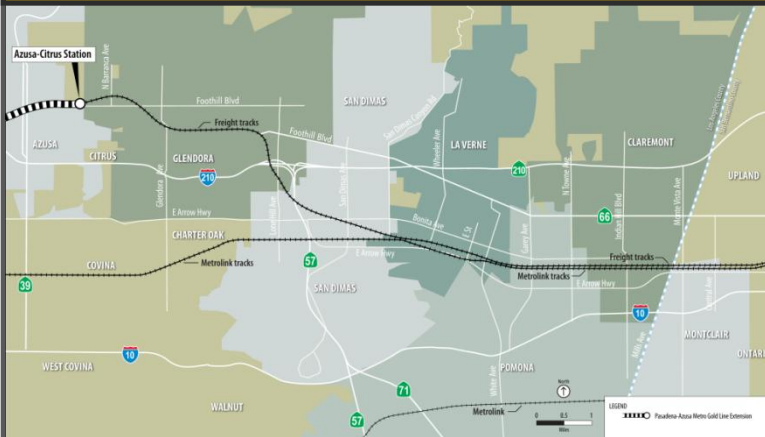


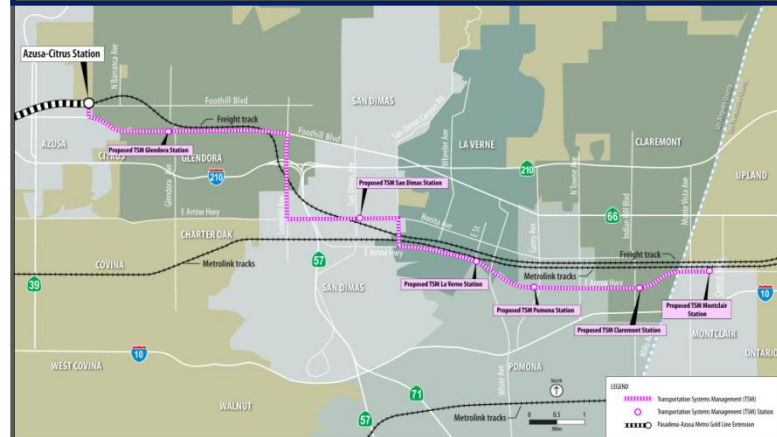
# No Build and TSM Alternatives

## No Build Alternative



- **Represents the Study Area in 2035, if the Project is not built**
- **Includes all existing highway and transit routes, and the committed highway and transit projects specified in:**
  - **Southern California Association of Governments (SCAG) 2008 Regional Transportation Plan (RTP)**
  - **Metro 2009 Long Range Transportation Plan (LRTP)**
- **Includes the Pasadena – Azusa Extension, currently under construction (completion anticipated late 2014)**

## TSM Alternative



- **Includes:**
  - **Intersection improvements**
  - **Signal synchronization**
  - **Rapid bus line that resembles service of the Build Alternatives**

# Build Alternative

## Proposed Metro Gold Line Foothill Extension — Azusa to Montclair



- Extends light rail 12.6 miles from Azusa to Montclair
- Operates on two light rail tracks next to freight track along the existing Metro-owned right-of-way, also currently used by Metrolink
- Six new stations in Glendora, San Dimas, La Verne, Pomona, Claremont, and Montclair

# Build Mode – Light Rail Transit (LRT)

## Light Rail Transit (LRT)

- **Electrically powered by overhead wires**
- **Vehicles can be linked together to accommodate up to 500 passengers per 3-car train**
- **Requires traction power substations every mile along tracks**
- **Example: Existing Metro Gold Line between Los Angeles and Pasadena**



# Environmental Topics

## Environmental Issues to be Studied in EIS/EIR

- **Traffic & Circulation**
- **Land Use & Development**
- **Real Estate & Acquisitions**
- **Communities & Neighborhoods**
- **Visual & Aesthetics**
- **Air Quality**
- **Noise & Vibration**
- **Ecosystems & Biological Resources**
- **Geotechnical/Subsurface/Seismic/  
Hazardous Materials**
- **Water Resources**
- **Energy**
- **Historical, Archaeological &  
Paleontological Resources**
- **Parklands & Community Facilities**
- **Economic Development & Fiscal**
- **Safety & Security**
- **Construction Impacts**
- **Growth Inducing Impacts**
- **Environmental Justice**
- **Climate Change**
- **Cumulative Impacts**

*Did we miss anything?*

# Ways to Provide Comments

## Tonight

- **Make a comment during Q&A**
- **Complete a comment sheet**
- **Provide comments to the court reporter**

## After Tonight

- **Comment by Mail:**  
Lisa Levy Buch  
Director of Public Affairs  
Metro Gold Line Foothill Extension  
Construction Authority  
406 E. Huntington Drive, Suite 202  
Monrovia, CA 91016
- **Comment by Email:**  
[llevybuch@foothillextension.org](mailto:llevybuch@foothillextension.org)

## Scoping Meetings:

- **Wednesday, January 12, 2011, 6-8 PM** - Ganesha Community Center, 1575 North White Avenue, Pomona
- **Thursday, January 13, 2011, 6-8 PM** - Glendora Teen and Family Center, 241 West Dawson, Glendora
- **Wednesday, January 19, 2011, 6-8 PM** - Oakmont Elementary School, 120 West Green Street, Claremont
- **Thursday, January 20, 2011, 6-8 PM** - Ekstrand Elementary School, 400 North Walnut Avenue, San Dimas

**Comments must be postmarked on or before February 2, 2011 to be made part of the Scoping Phase.**



# Meeting Schedule

- **6:15 - 7:00 p.m.** – Presentation and Opportunity for Comments/Questions
- **7:00 – 8:00 p.m.** – Open House (talk one-on-one with project staff)

## Open House - Information Stations:

- **Project Overview**
- **Environmental Review Process**
- **City/Station Concepts**
- **Comments**
- **Court Reporter**

**Your feedback is important! Please provide your comments before close of the comment period.**

# GOLD LINE

IMAGINE THE CONNECTIONS



[www.foothillextension.org](http://www.foothillextension.org)

## FOOTHILL EXTENSION

METRO GOLD LINE FOOTHILL EXTENSION CONSTRUCTION AUTHORITY